

FOREST GLEN ROAD SIDEWALK

PLANNING BOARD
BRIEFING
OCTOBER 6, 2022



MC DOT

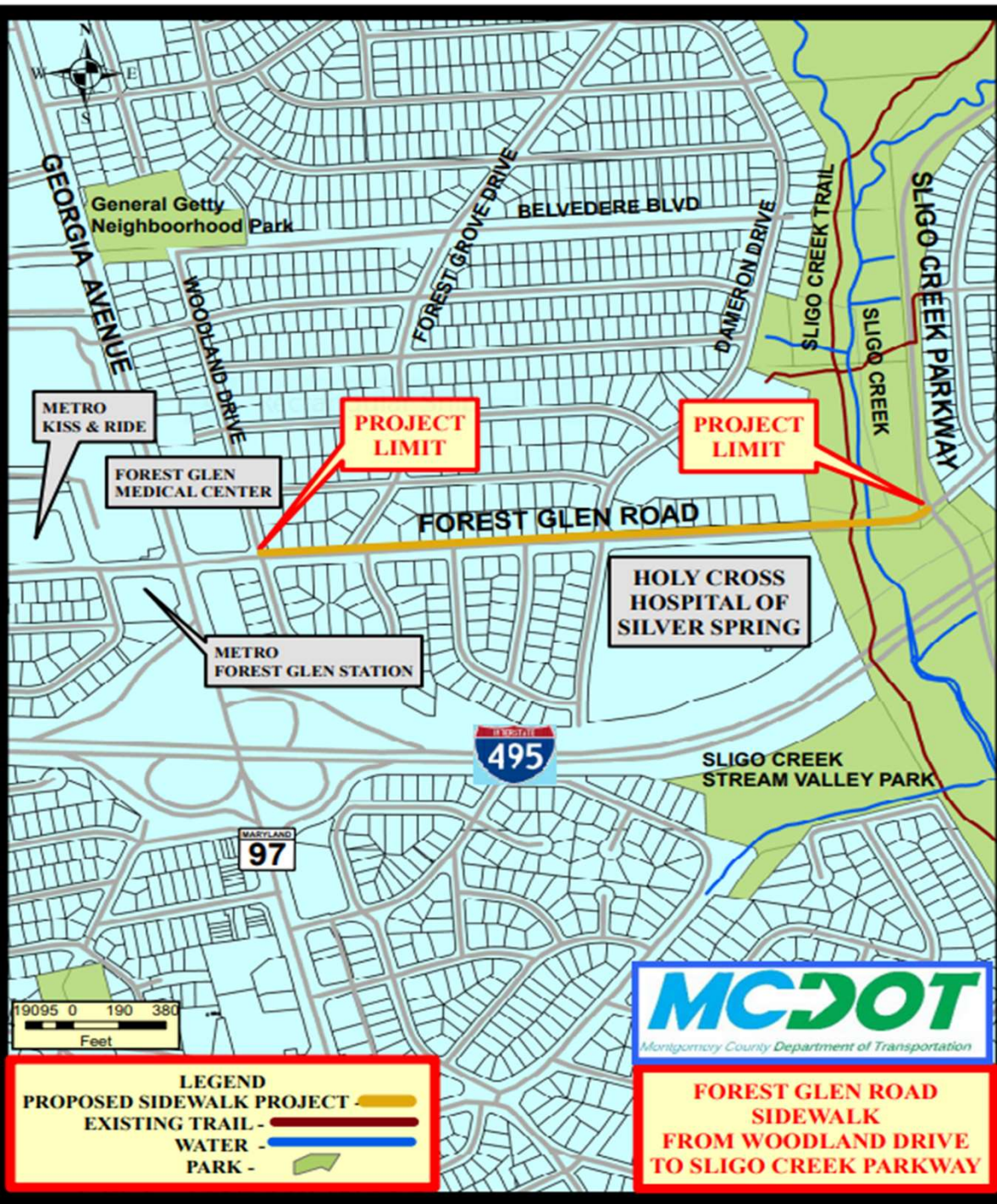
Outline

- Project Limits/Background
- Project Purpose
- Project Overview
- Conceptual Design
 - Option 1
 - Option 2
- Impacts Quantities
- Project Cost Estimate
- Project Schedule
- Discussion



Project Limits/ Background

- *November 2015*-Received request of the sidewalk construction along the north side of roadway.
- *May 2017*-Applied for Transportation Alternatives Program (TAP) Grant for preliminary (35%) design.
- *July 2018*-Awarded TAP Grant.
- *October 2020*-Started the preliminary design.
- *June 2021*-Virtual Public Meeting



Project Purpose

- Address **connectivity** and **safety** needs on Forest Glen Road.
- Connectivity to existing sidewalks, Sligo Creek Trail, Forest Glen Metro Station, Forest Glen Medical Center, Holy Cross Hospital, and Sligo Creek Stream Valley Park.
- Enhance safety for pedestrians and bicyclists, in keeping with Montgomery County Vision Zero Action Plan.



Project Overview

Sidewalk Improvement

- North side of Forest Glen Road
- Woodland Drive to Sligo Creek Parkway (Approx ½ mile)
- 6' wide concrete sidewalk
- 0'-6' wide grass buffer

Bike Path Improvement

- South side of Forest Glen Road
- Upgrade ex. sidepath to 8' width and addition of grass buffer

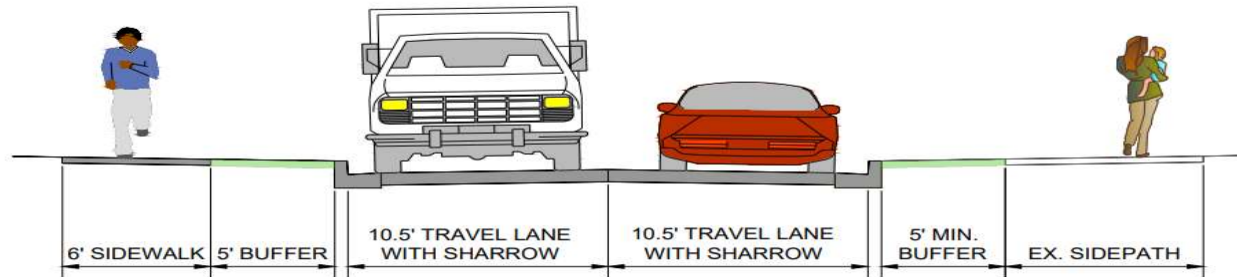


Conceptual Design

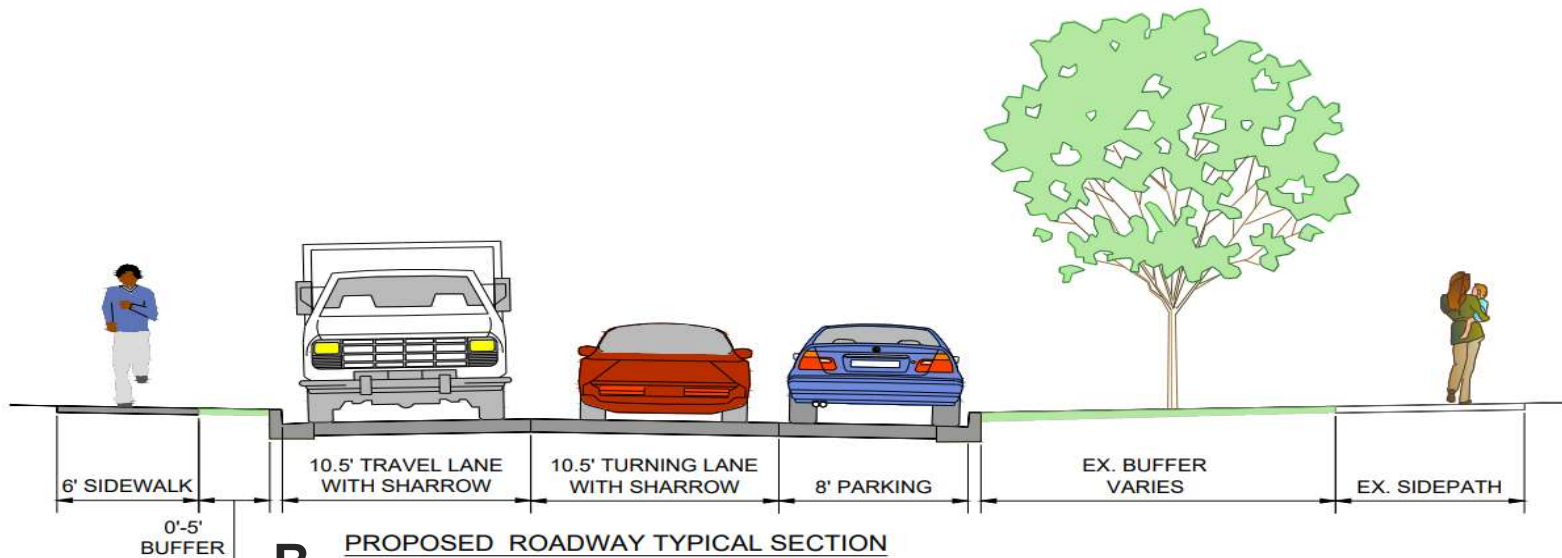
Option 1



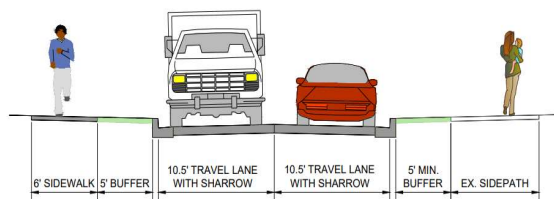
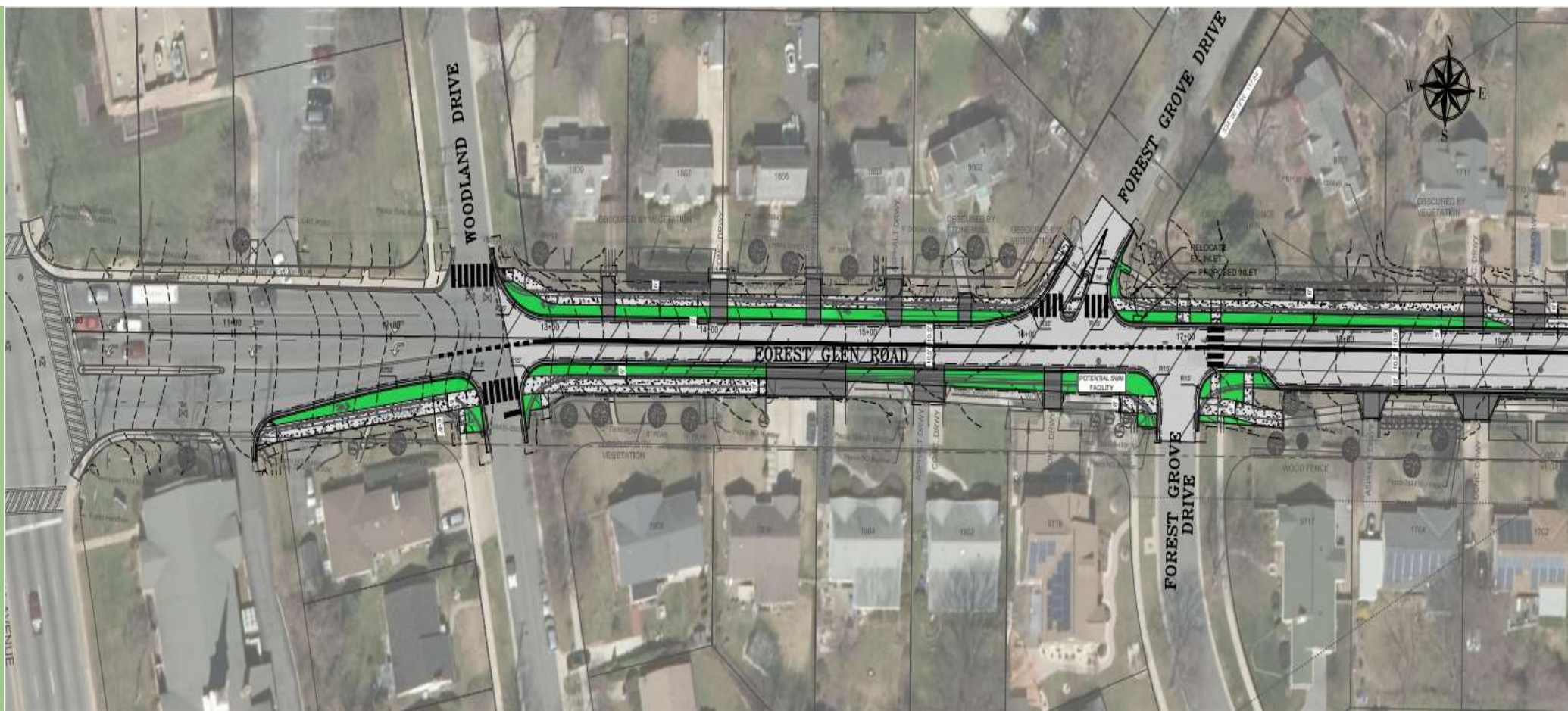
Typical Sections



A PROPOSED ROADWAY TYPICAL SECTION
WOODLAND DRIVE TO FOREST GROVE DRIVE



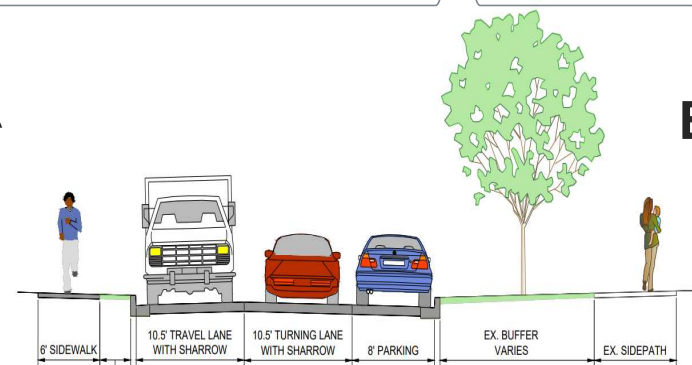
B PROPOSED ROADWAY TYPICAL SECTION
FOREST GROVE DRIVE TO SAXONY ROAD



A

PROPOSED ROADWAY TYPICAL SECTION
WOODLAND DRIVE TO FOREST GROVE DRIVE

A



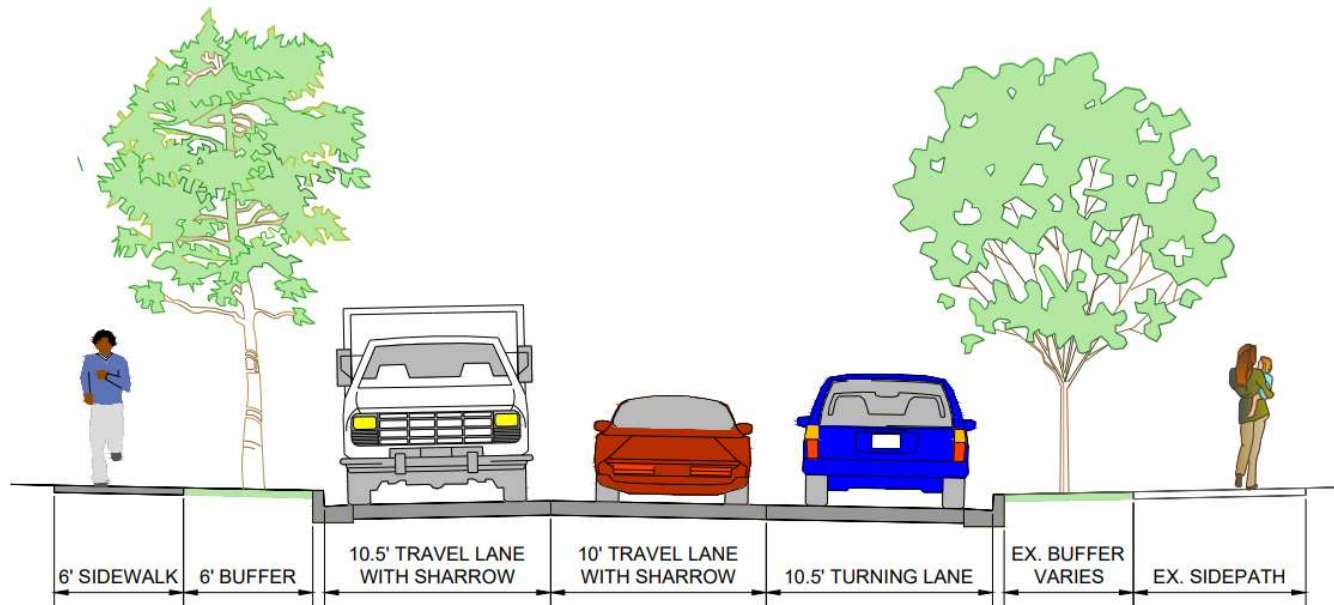
B

PROPOSED ROADWAY TYPICAL SECTION
FOREST GROVE DRIVE TO SAXONY ROAD

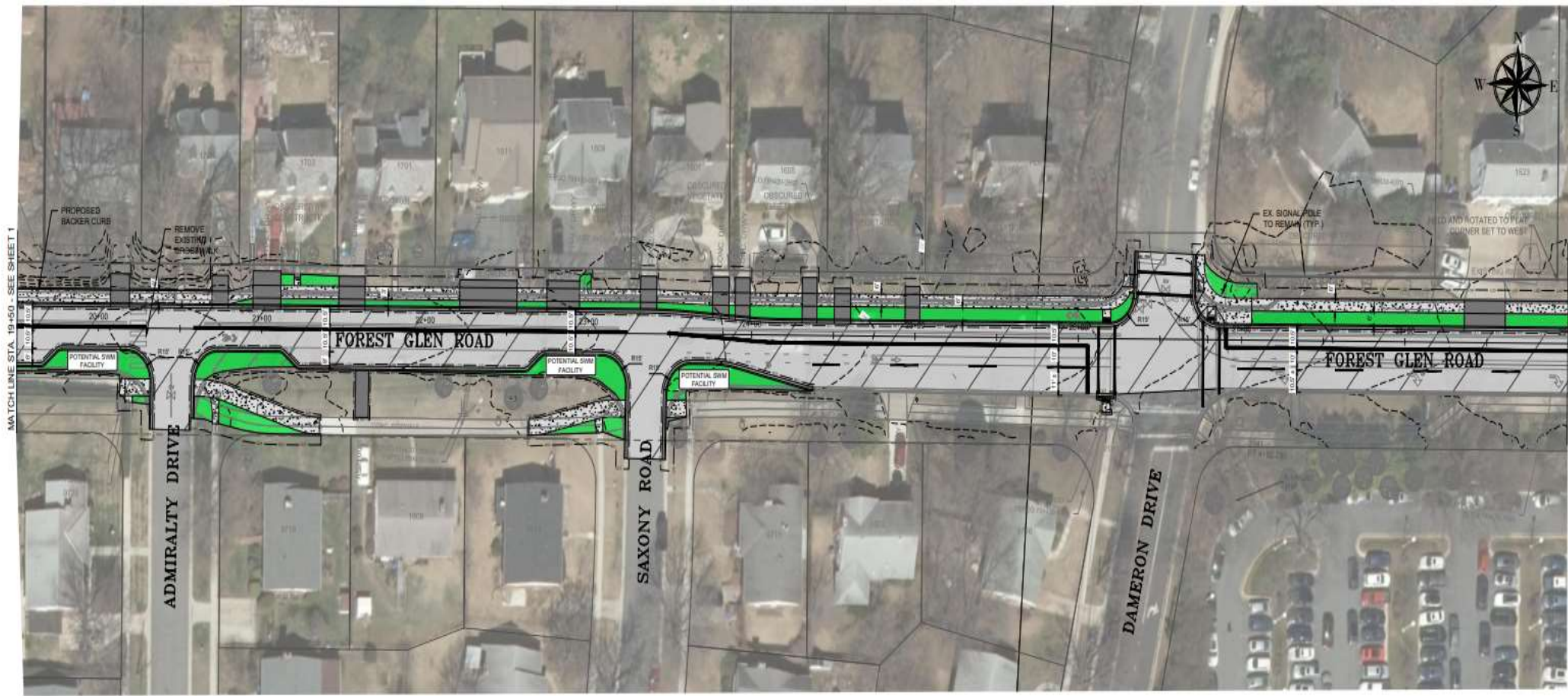
B



Typical Sections



C PROPOSED ROADWAY TYPICAL SECTION
SAXONY ROAD TO HOSPITAL ENTRANCE

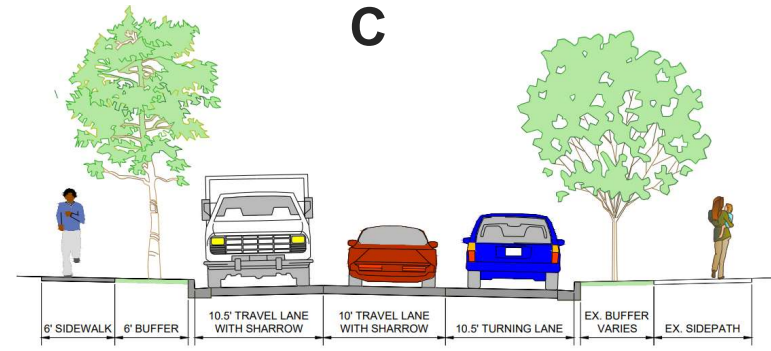
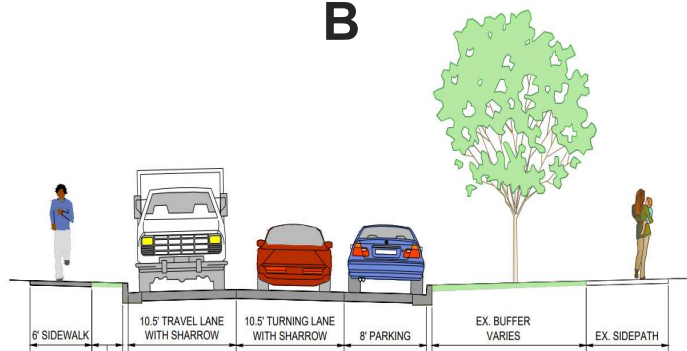


MATCHLINE STA. 19+50 - SEE SHEET 1

MATCHLINE STA. 29+00 - SEE SHEET 3

B

C

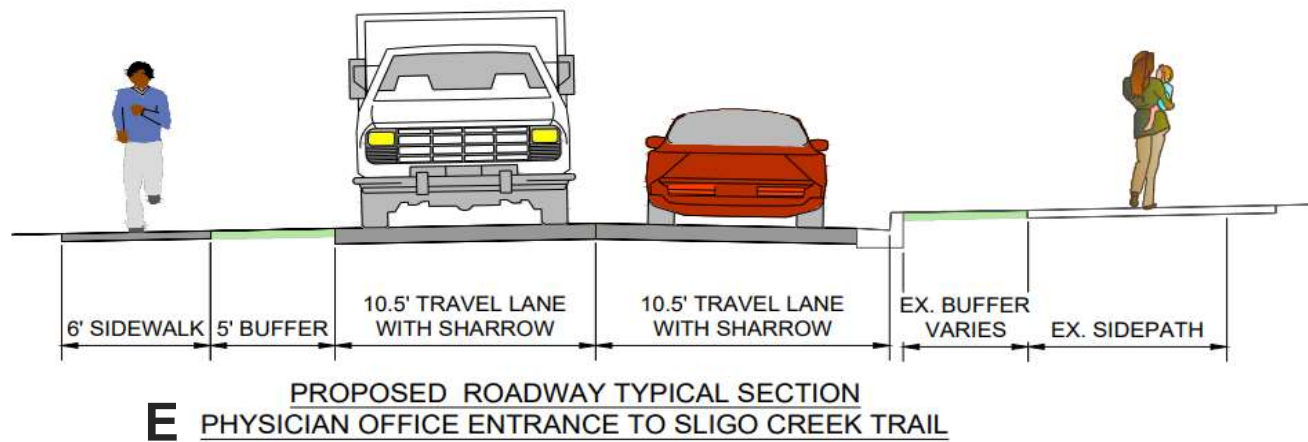
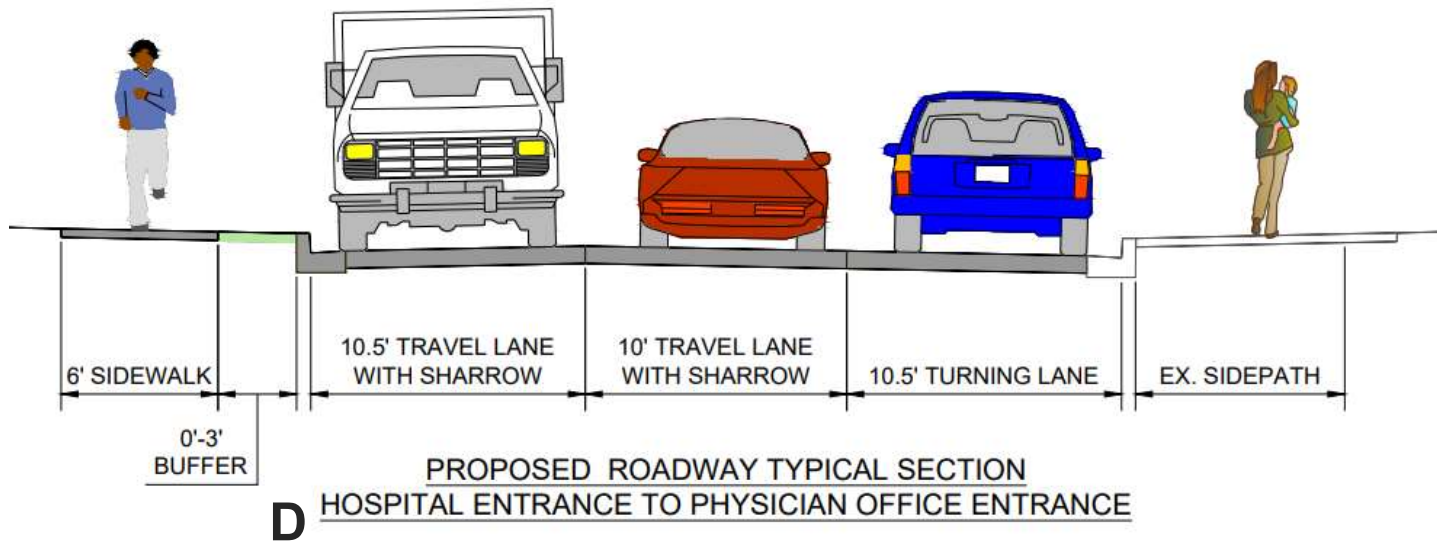


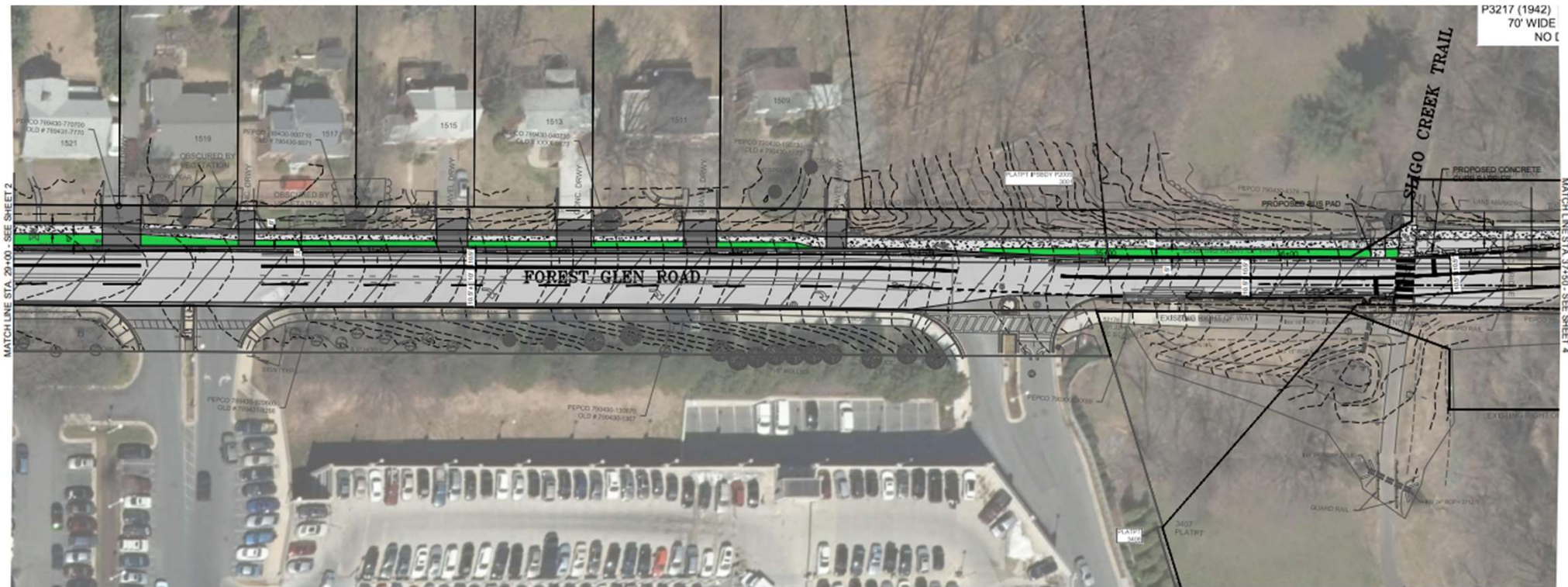
B PROPOSED ROADWAY TYPICAL SECTION
FOREST GROVE DRIVE TO SAXONY ROAD

C PROPOSED ROADWAY TYPICAL SECTION
SAXONY ROAD TO HOSPITAL ENTRANCE



Typical Sections

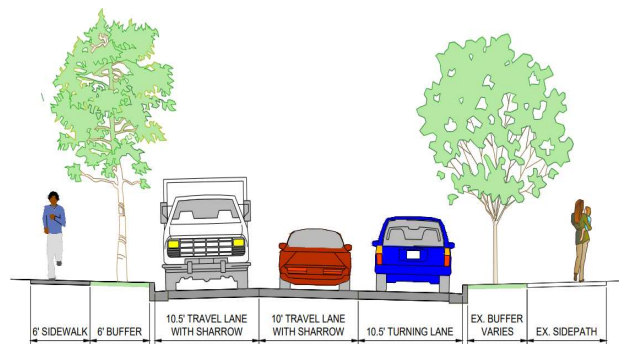




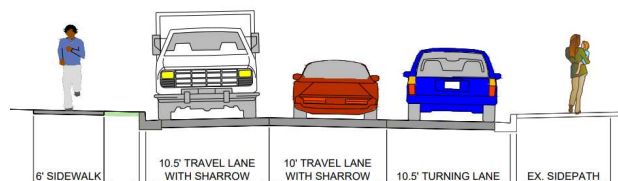
C

D

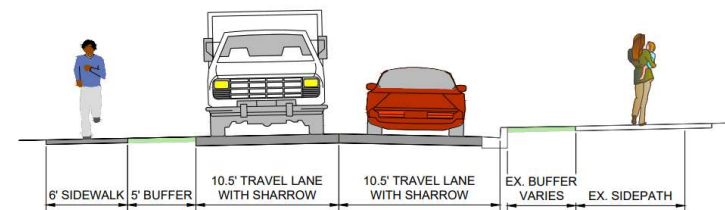
E



C PROPOSED ROADWAY TYPICAL SECTION
SAXONY ROAD TO HOSPITAL ENTRANCE



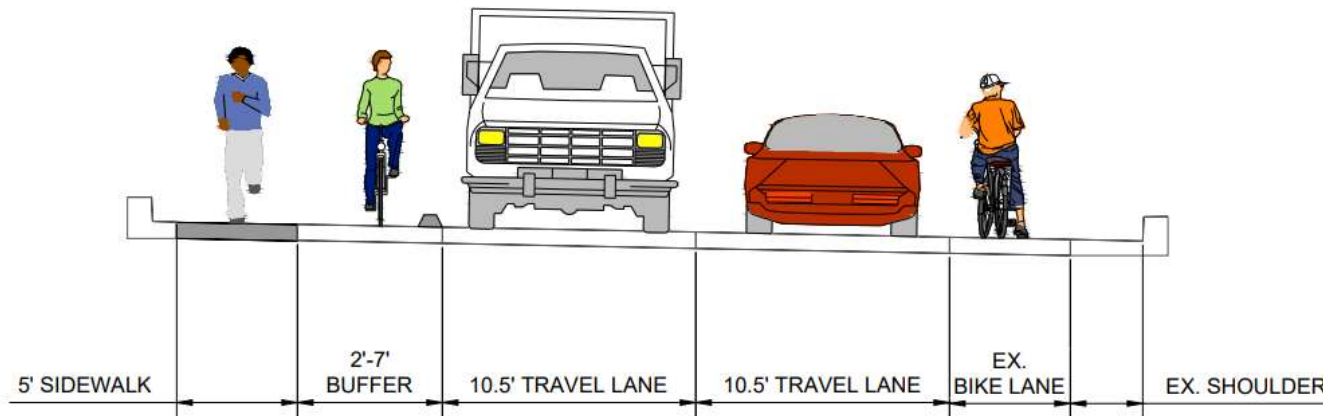
D PROPOSED ROADWAY TYPICAL SECTION
HOSPITAL ENTRANCE TO PHYSICIAN OFFICE ENTRANCE



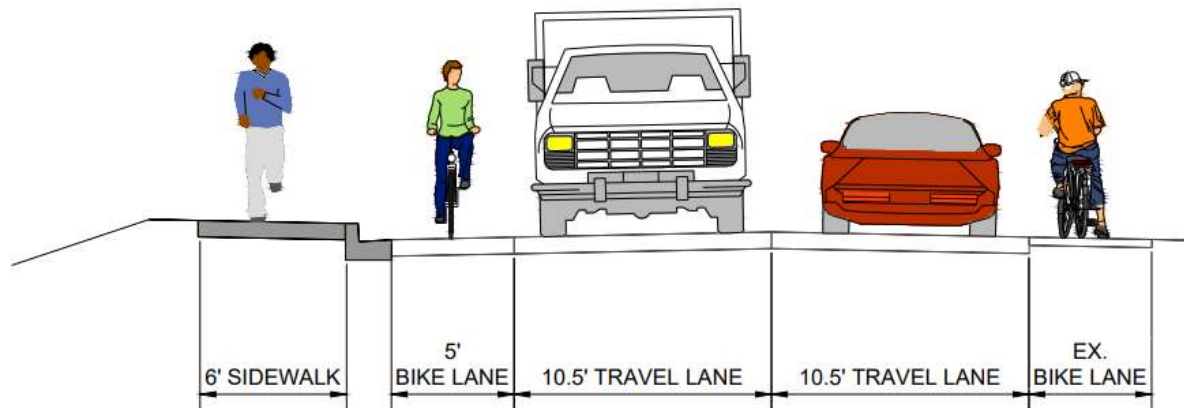
E PROPOSED ROADWAY TYPICAL SECTION
PHYSICIAN OFFICE ENTRANCE TO SLIGO CREEK TRAIL



Typical Sections



F PROPOSED ROADWAY TYPICAL SECTION
BRIDGE SECTION

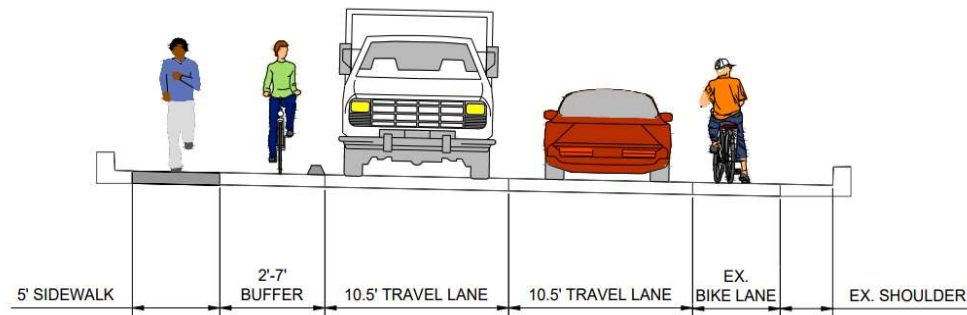


G PROPOSED ROADWAY TYPICAL SECTION
SLIGO CREEK TRAIL TO SLIGO CREEK PARKWAY

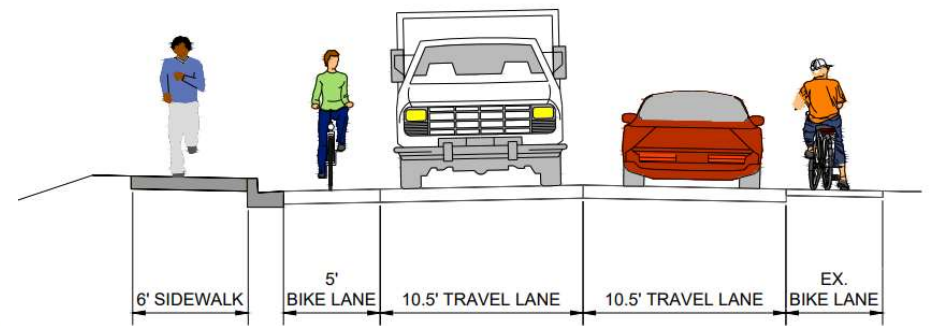


F

G



F PROPOSED ROADWAY TYPICAL SECTION
BRIDGE SECTION



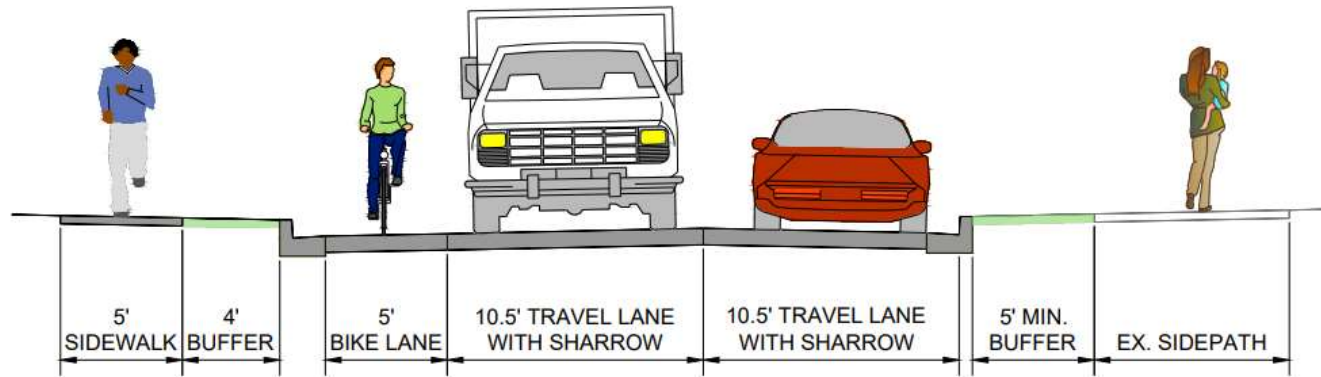
G PROPOSED ROADWAY TYPICAL SECTION
SLIGO CREEK TRAIL TO SLIGO CREEK PARKWAY

Conceptual Design

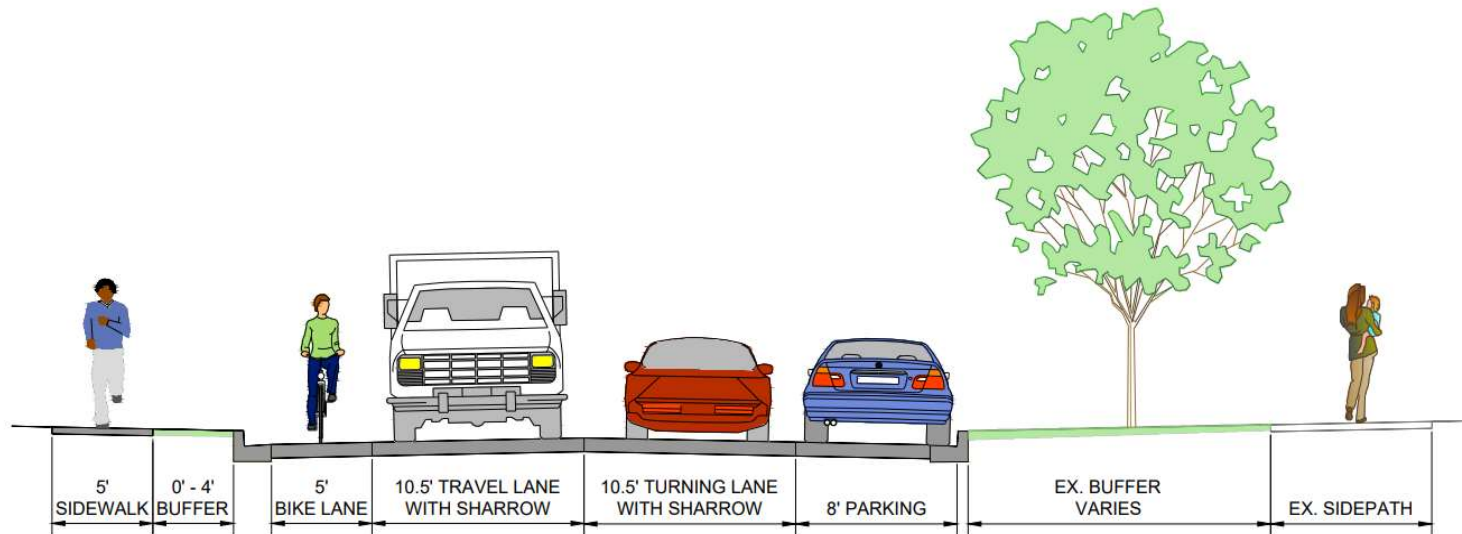
Option 2



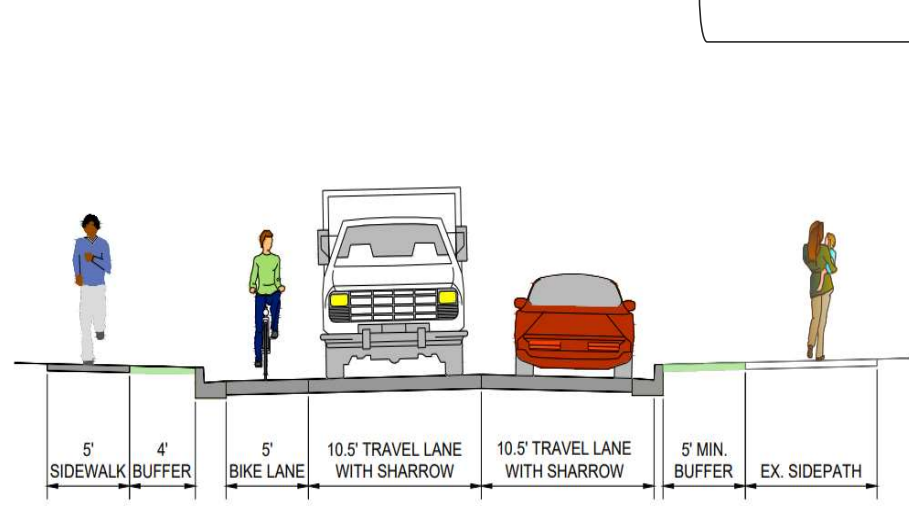
Typical Sections



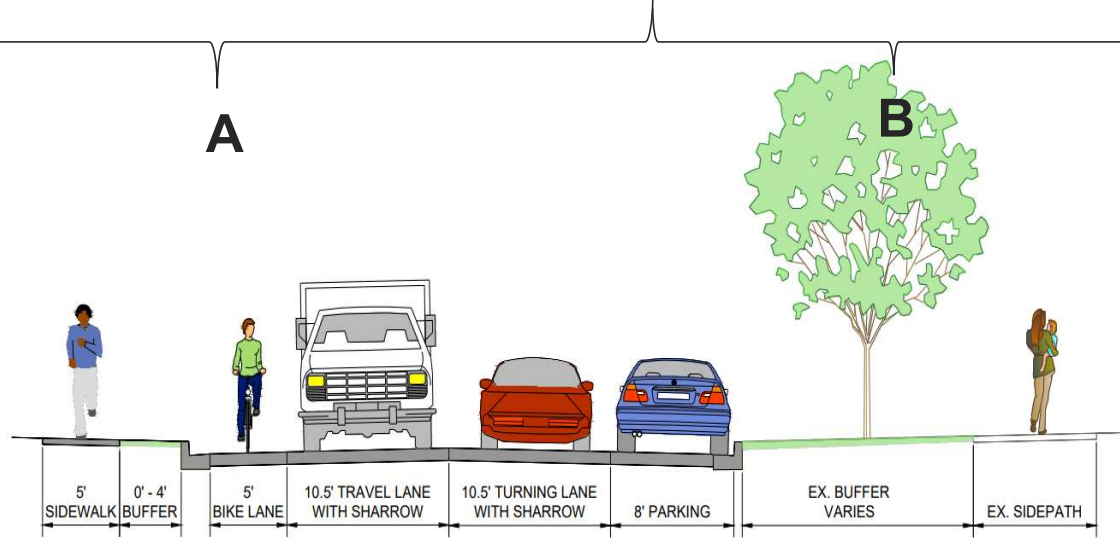
A PROPOSED ROADWAY TYPICAL SECTION
WOODLAND DRIVE TO FOREST GROVE DRIVE



B PROPOSED ROADWAY TYPICAL SECTION
FOREST GROVE DRIVE TO SAXONY ROAD



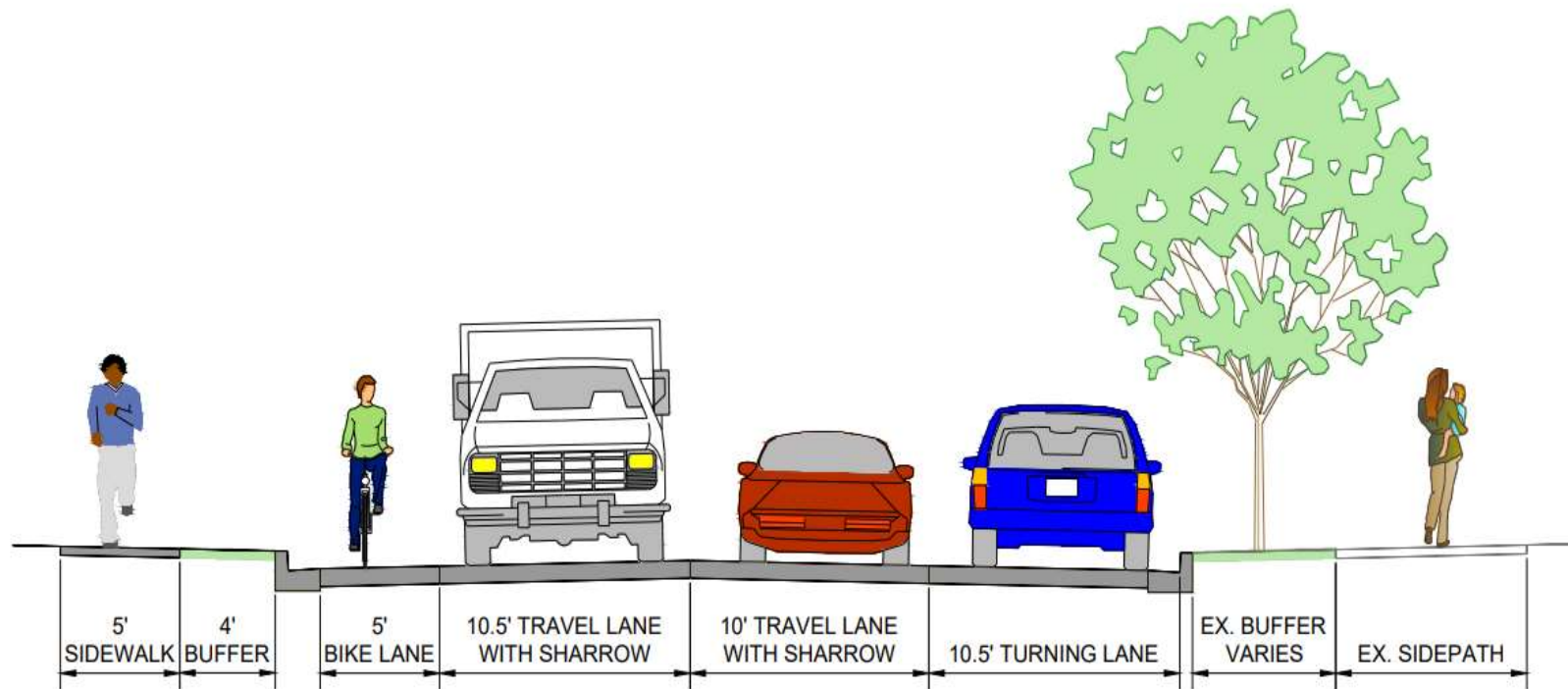
A PROPOSED ROADWAY TYPICAL SECTION
WOODLAND DRIVE TO FOREST GROVE DRIVE



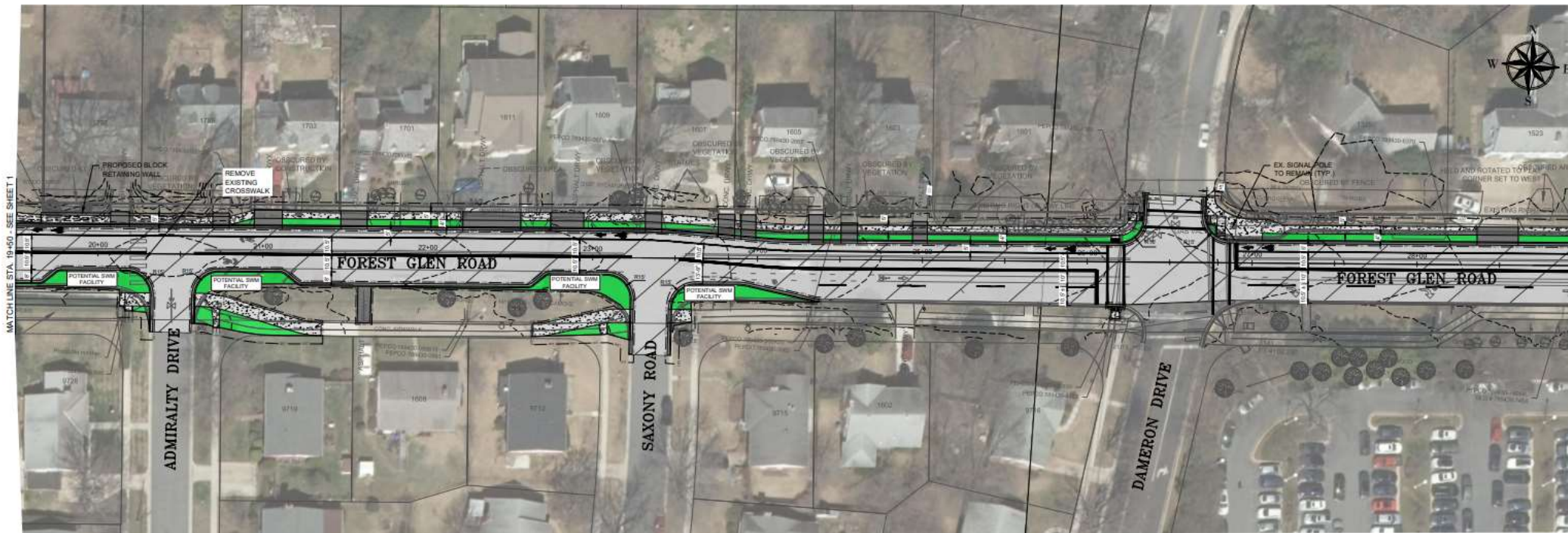
B PROPOSED ROADWAY TYPICAL SECTION
FOREST GROVE DRIVE TO SAXONY ROAD



Typical Sections

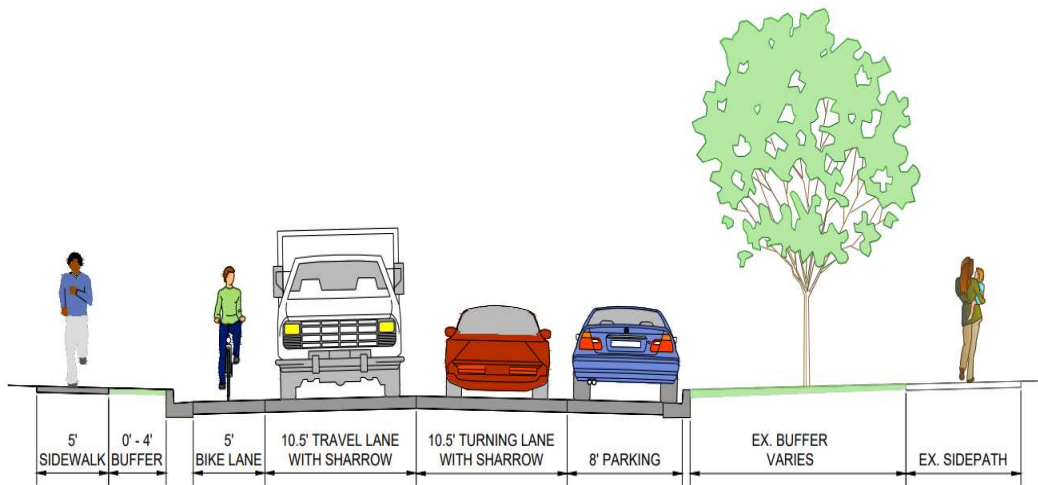


C PROPOSED ROADWAY TYPICAL SECTION
SAXONY ROAD TO PHYSICIAN OFFICE ENTRANCE



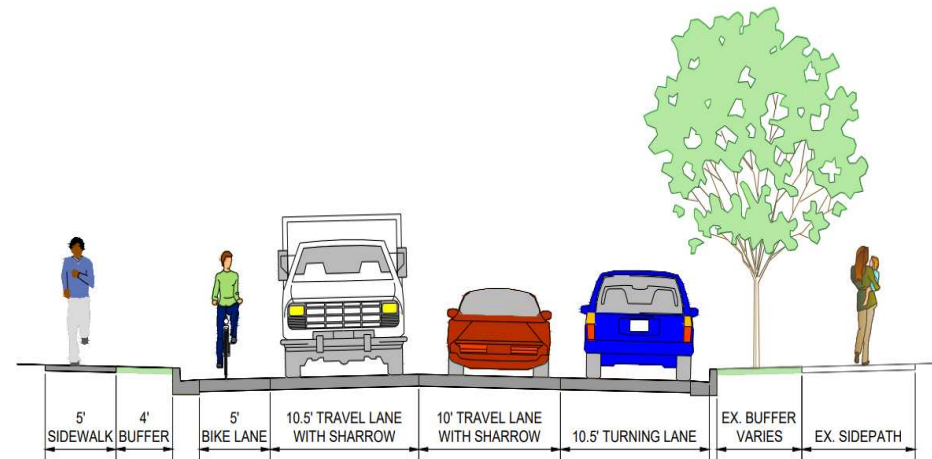
B

C



B

PROPOSED ROADWAY TYPICAL SECTION
FOREST GROVE DRIVE TO SAXONY ROAD

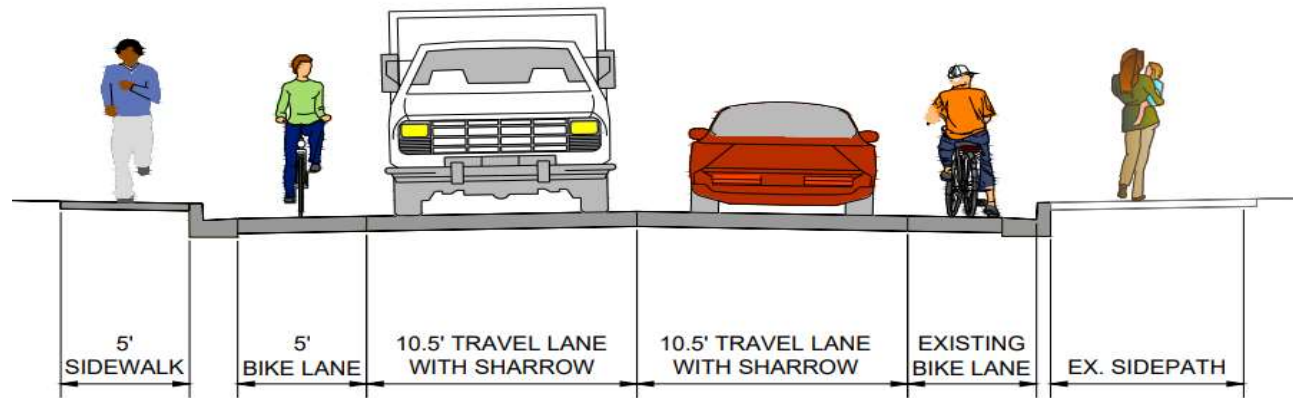


C

PROPOSED ROADWAY TYPICAL SECTION
SAXONY ROAD TO PHYSICIAN OFFICE ENTRANCE

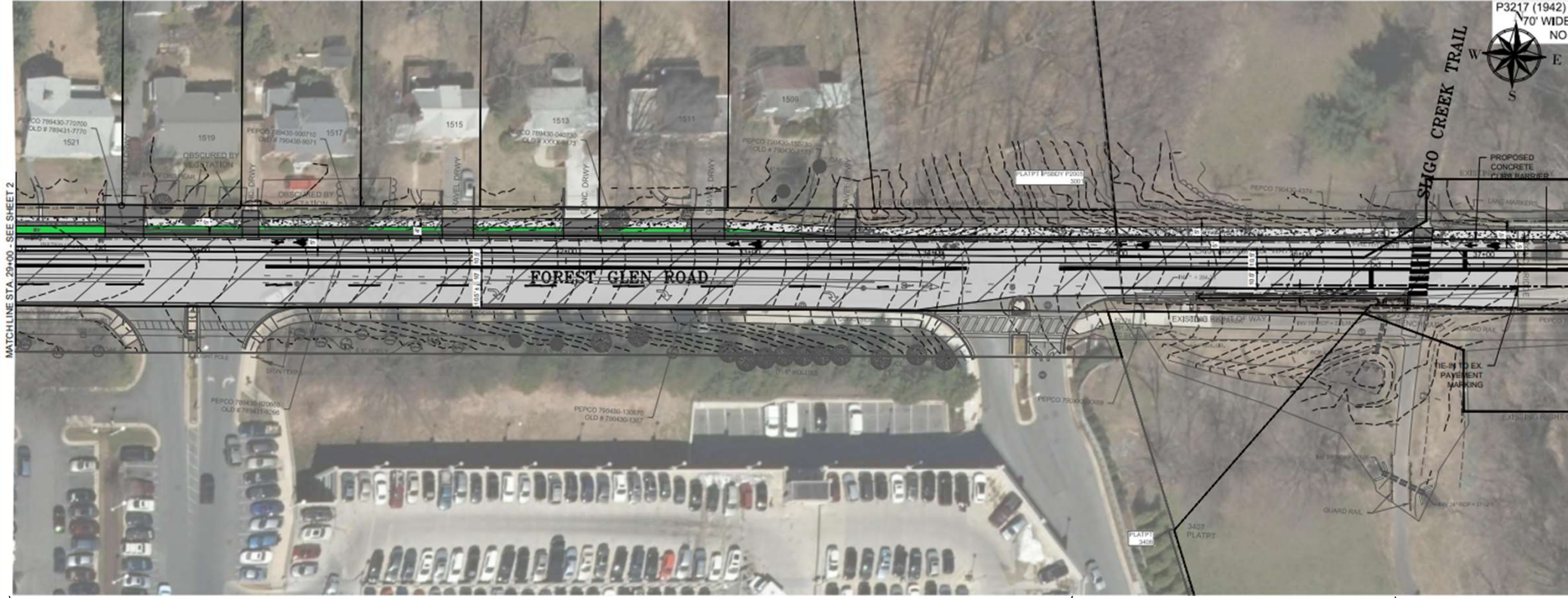


Typical Sections



D PROPOSED ROADWAY TYPICAL SECTION
PHYSICIAN OFFICE ENTRANCE TO SLIGO CREEK TRAIL

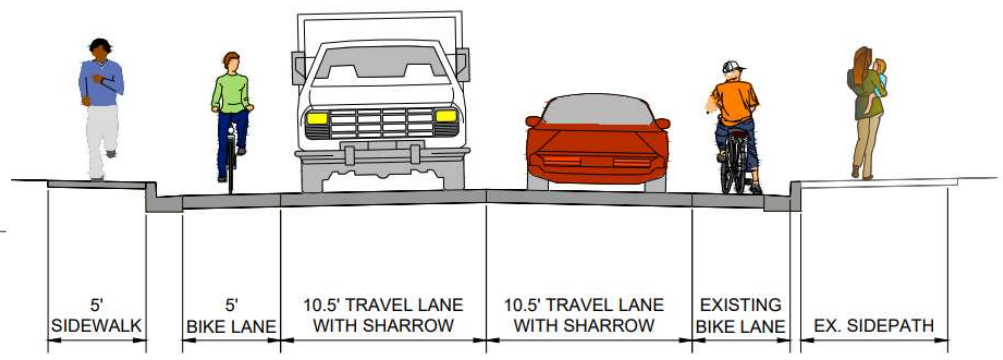
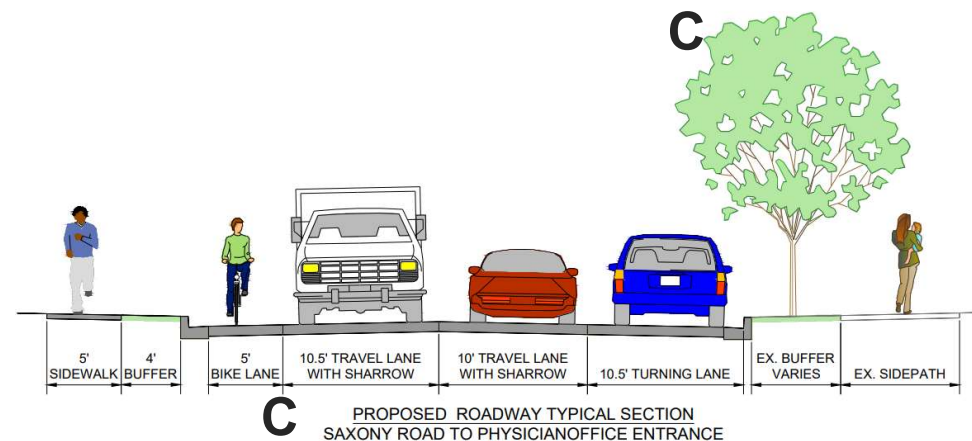




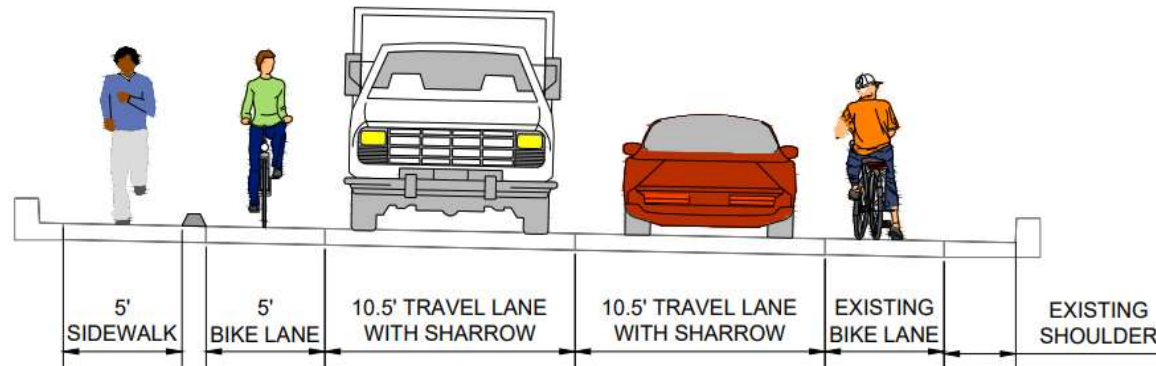
MATCHLINE STA. 29+00 - SEE SHEET 2

C

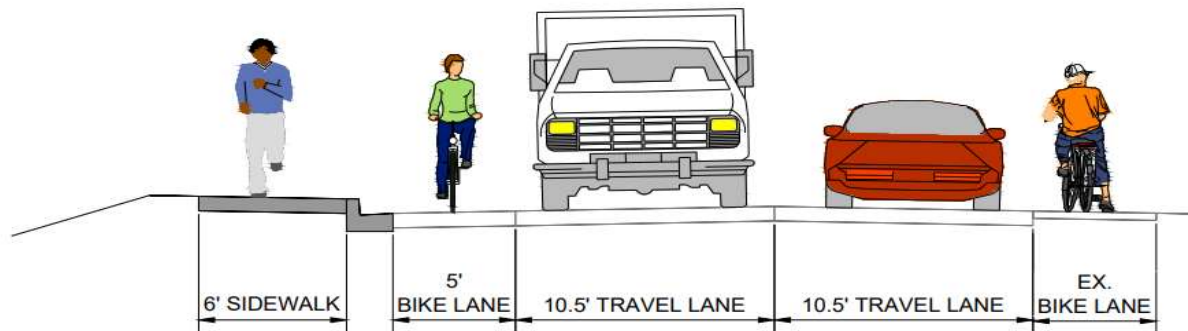
D



Typical Sections

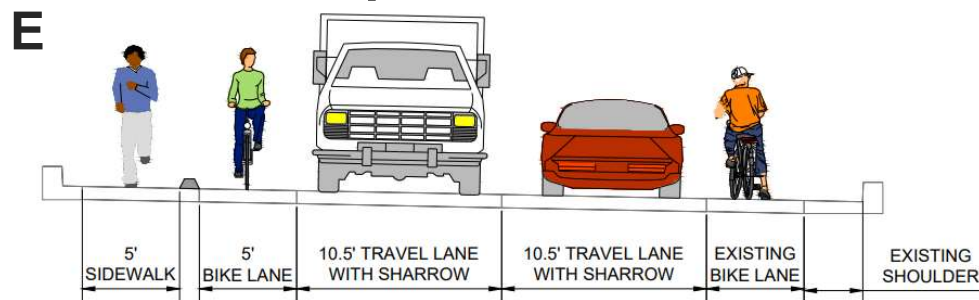
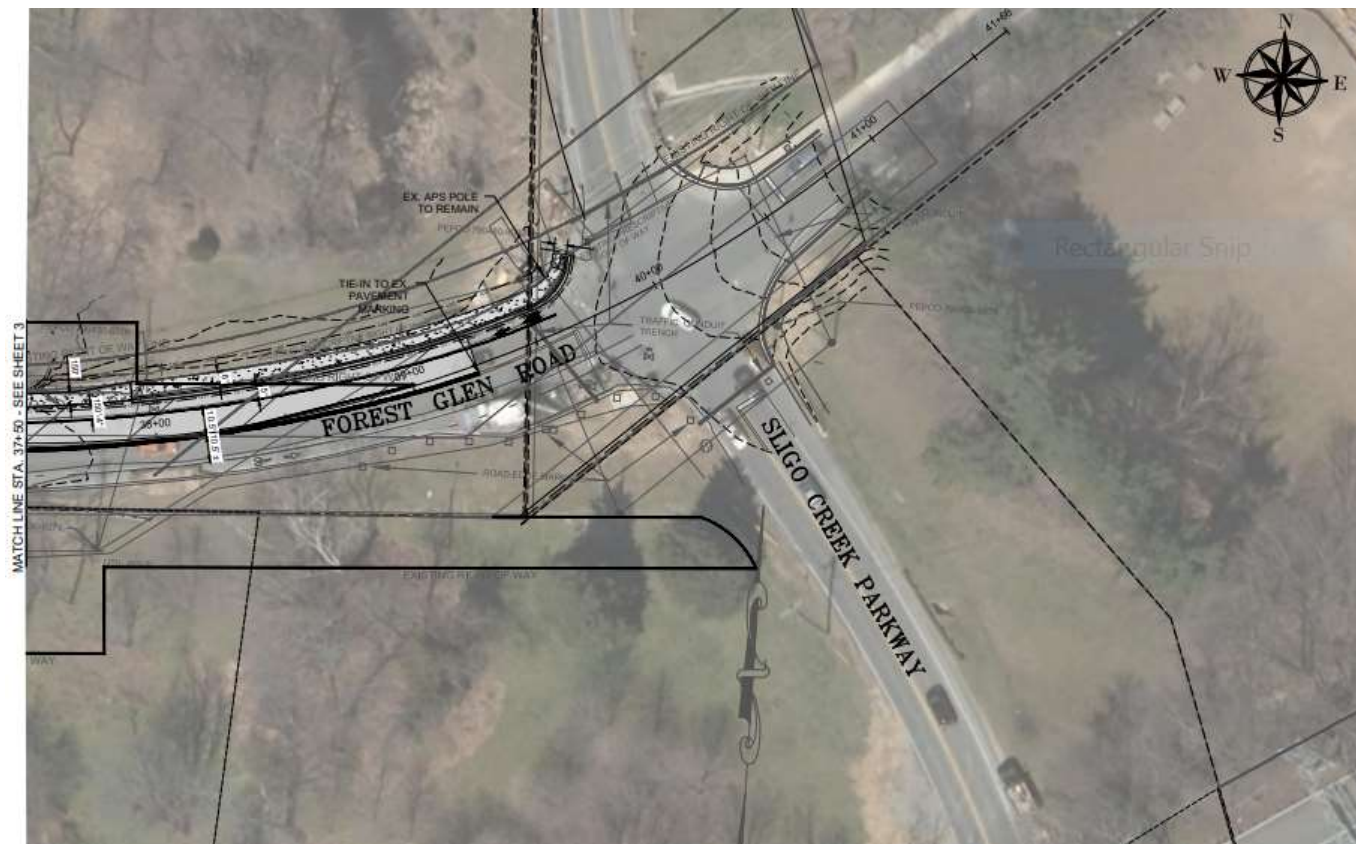


E PROPOSED ROADWAY TYPICAL SECTION
AT BRIDGE OVER SLIGO CREEK

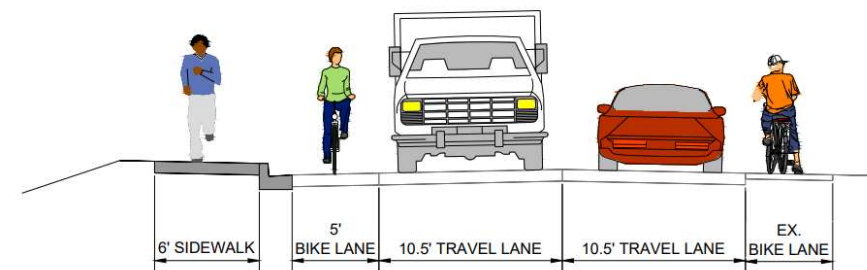


F PROPOSED ROADWAY TYPICAL SECTION
SLIGO CREEK TRAIL TO SLIGO CREEK PARKWAY





E PROPOSED ROADWAY TYPICAL SECTION
AT BRIDGE OVER SLIGO CREEK



F PROPOSED ROADWAY TYPICAL SECTION
SLIGO CREEK TRAIL TO SLIGO CREEK PARKWAY



Impacts Quantities

Impact	Option 1	Option 2
Utility Impacts	11 Poles	15 Poles
Tree Impacts	3	11
Property Impacts (#)	17	23
ROW Impacts	9,318 SF	8,929 SF
Construction Cost	\$1,383,000	\$1,437,000



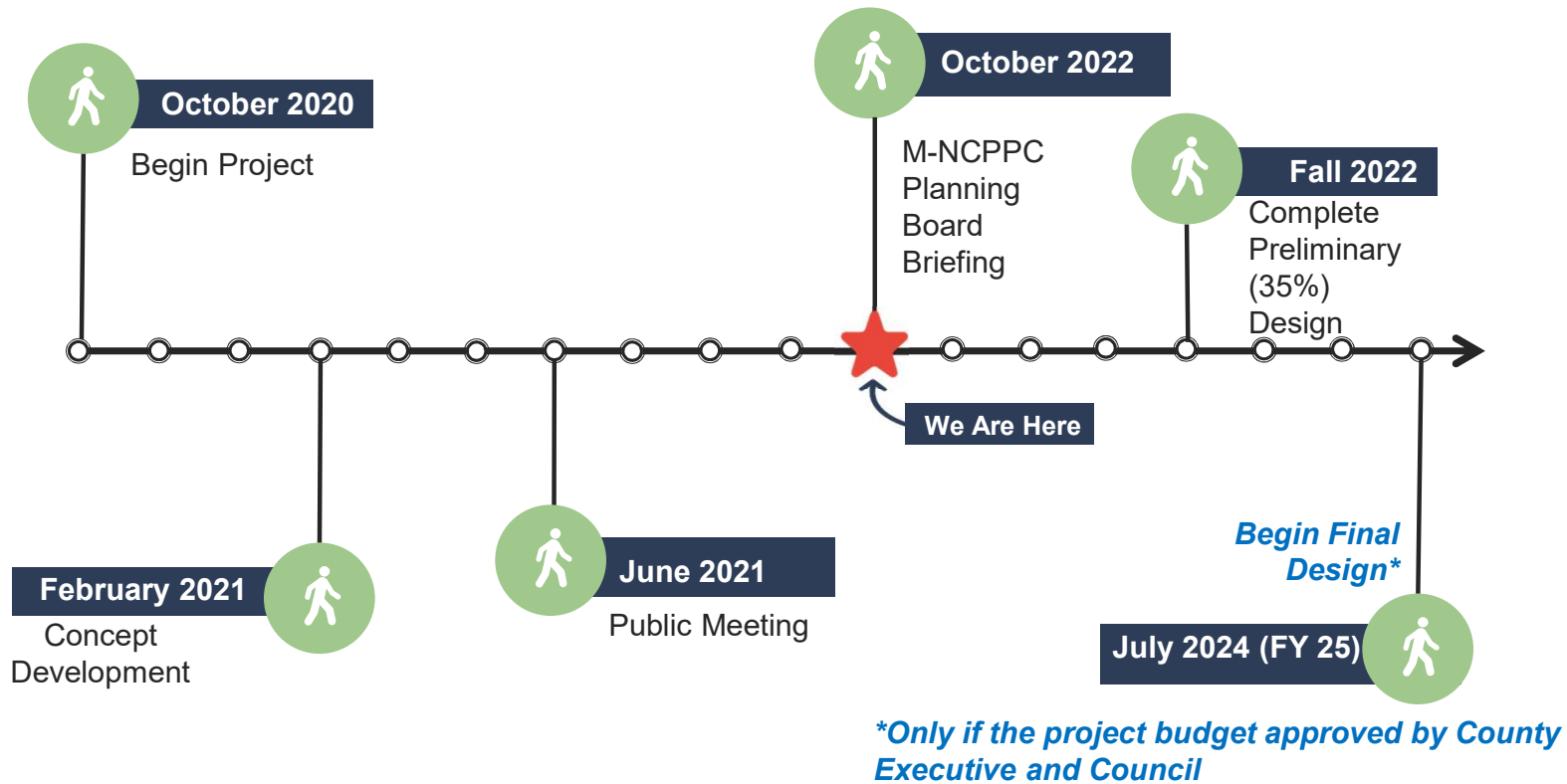


Project Cost Estimate

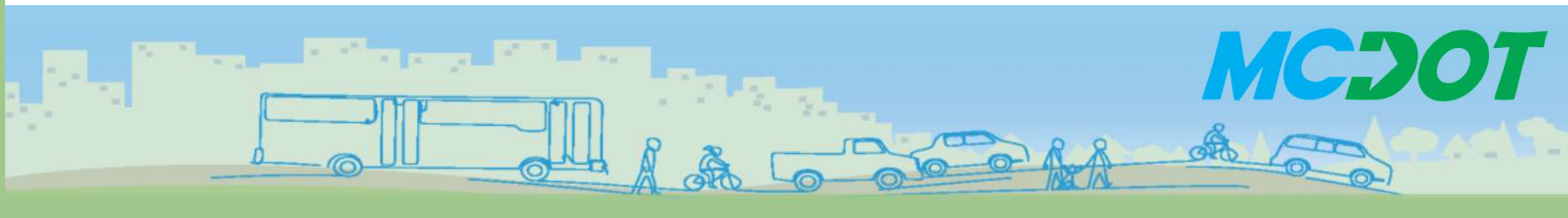
	Option 1	Option 2
Planning, Design and Supervision	\$1,330K	\$1,330K
Land	\$162K	\$171K
Site Improvements and Utilities	\$525K	\$585K
Construction	\$1,383K	\$1,437K
Total Project Estimate	\$3.4M	\$3.5M



Project Schedule



Discussion



MC DOT