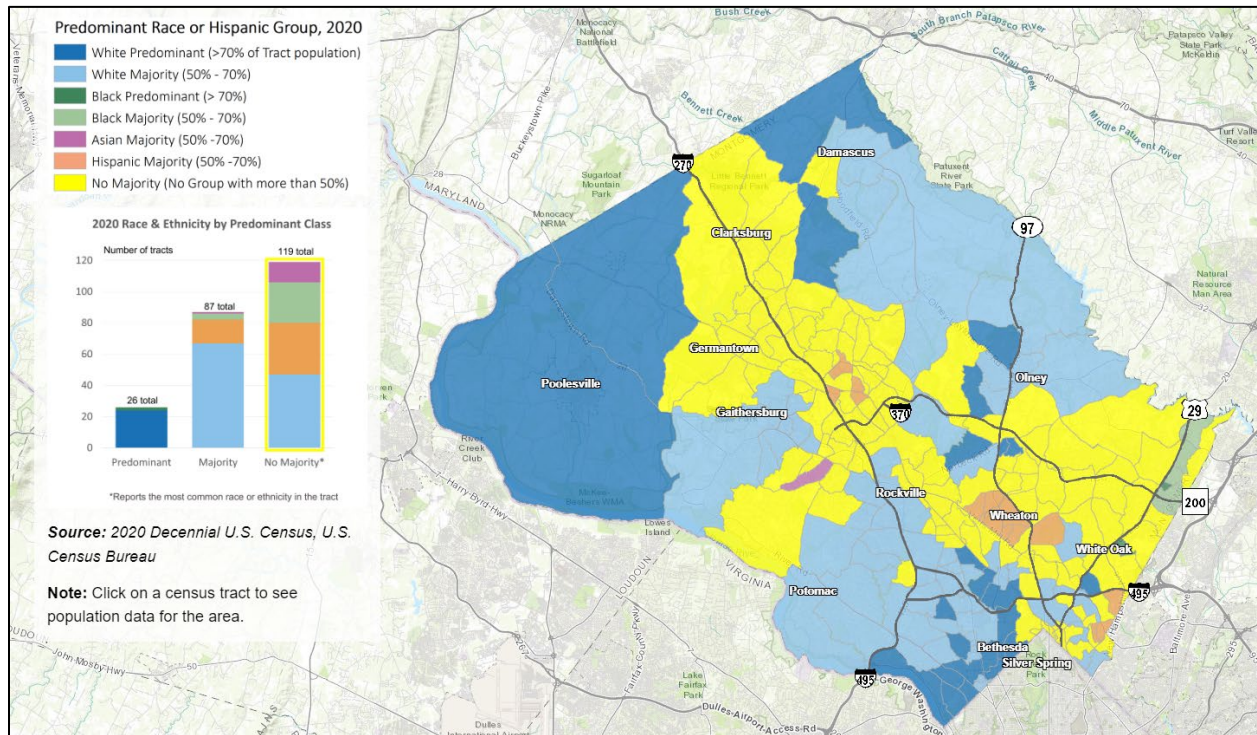


# BRIEFING ON RACIAL AND ETHNIC TRENDS STORYMAP



## Description

Staff from the Research and Strategic Projects Division will provide a briefing on an ESRI ArcGIS storymap they created that describes the evolution of racial and ethnic diversity from 1990 to 2020 in Montgomery County, Maryland. The goal of this storymap is to provide a resource to help planners and the public understand the demographic trends in the county and at Census tract geographies over time. The storymap also serves as a tool to quickly depict the concentration of the predominant, majority, or most common racial/ethnic group over time.

**MCPB ITEM #9**

**DATE: 12-1-2022**

**COMPLETED: 11-15-22**



Archie Chen, Planning Research Associate, Research and Strategic Projects,  
[Archie.Chen@montgomeryplanning.org](mailto:Archie.Chen@montgomeryplanning.org), 301-495-1301



Carrie McCarthy, Division Chief, Research and Strategic Projects,  
[Caroline.McCarthy@montgomeryplanning.org](mailto:Caroline.McCarthy@montgomeryplanning.org), 301-495-4506

## SUMMARY

- The briefing will provide an overview of the storymap and show the key racial and ethnic shifts between 1990 and 2020. The analysis is based on the [race](#) and [Hispanic origin](#) classifications and Decennial Census released by the U.S. Census Bureau and focused on four major racial and ethnic groups in Montgomery County: non-Hispanic Asian, non-Hispanic Black, non-Hispanic White, and Hispanic. (While the number of multi-racial people is increasing, the numbers are not yet large enough to be statistically significant at the tract level for a meaningful comparative analysis.)
- The first series of maps look at changes for individual races and Hispanic ethnicity. The second series of maps provides more details on changes in racial predominance in individual Census tracts, and the third series of maps reveal the most common racial or ethnic group in those tracts where no single race or ethnicity is a majority.
- The main findings are that:
  - a) The share of the population that is people of color more than doubled, increasing from 28% in 1990 to 59% in 2020. The Hispanic population increased the largest amount of any racial or ethnic group. The number of non-Hispanic Whites is declining.
  - b) The racial predominance maps show the notable concentrations of different racial and ethnic groups indicating an increasing spatial integration, especially through the central corridor and eastern side of the county,
  - c) Changes to the patterns of racial and ethnic group concentration and dispersion varies by group. In terms of the largest concentration of each group: Blacks are in the Fairland and Briggs Chaney area and along the Route 29; Asians are around North Potomac; Hispanics are around the Wheaton-Glenmont area; the lower density suburban and rural neighborhoods are still predominantly White, especially around Chevy Chase.
  - d) Between 1990 and 2020, the tracts with no majority racial/ethnic group (when no single group comprises more than 50% of the tract population) increased from 15 to 119 in number and from 9% to over half of all tracts (51%) in percentages.
- The storymap is available on the Research and Special Project Division's website at the following link: <https://bit.ly/3bMZvZ5>.

PROJECT INFORMATION

Briefing

Racial and Ethnic Trends Storymap

Date

December 1, 2022

Lead Planner

Archie Chen

Planning Division

Research & Strategic Projects

Staff Contact

Archie.Chen@montgomeryplanning.org