



MEMORANDUM

DATE: March 31, 2023

TO: Montgomery County Planning Board

FROM: Stephen Smith, Coordinator, IRC Division (301)-495-4522

Jay Beatty, Senior Planner, IRC Division (301)-495-2178

SUBJECT: Item No. 2 - Summary of Record Plats for the Planning Board
Agenda for April 13, 2023

The following record plats are recommended for APPROVAL, subject to the appropriate conditions of approval of the preliminary plan and site plan, if applicable, and conditioned on conformance with all requirements of Chapter 50 of the Montgomery County Code. Attached are specific recommendations and copies of plan drawings for the record plat. The following plats are included:

220220910 – 220220940 Bloom Montgomery Village (4)

220230400 PSTA

220230490 Greenacres

220230550 National Chatauqua of Glen Echo

220230660 Merrimack Park

Plat Name: Bloom Montgomery Village

Plat #: 220220910 – 220220940 (4)

Location: Located on the east side of Montgomery Village Avenue, 560 feet south of Stewartown Road

Master Plan: Montgomery Village Master Plan

Plat Details: TLD zone; 52 lots, 11 parcels

Owner: Green Bloom MV Development LLC

These subdivision plats have been reviewed by M-NCPPC staff and determined to be in compliance with Preliminary Plan No. 120170150 (MCPB Resolution No. 17-110), and with Site Plan No. 82017013D (Certified Site Plan dated October 12, 2022), as approved by the Board, and that any minor modifications reflected on the plats do not alter the intent of the Board's previous approval of the aforesaid plans.

NOTES

- 1) THE PROPERTY IS SUBJECT TO TAX ASSESSMENT MAP NO. F1342 WITH THE TAX ASSESSMENT YEAR 2022.
- 2) THE INSTRUMENT DATED ON THIS PLAT IS BASED ON MARYLAND STATE PLANE 83/7011.
- 3) THE PROPERTY IS SUBJECT TO TAX ASSESSMENT MAP NO. F1342 WITH THE TAX ASSESSMENT YEAR 2022.
- 4) THE PROPERTY IS SUBJECT TO TAX ASSESSMENT MAP NO. F1342 WITH THE TAX ASSESSMENT YEAR 2022.
- 5) THIS PLAT IS SUBJECT TO THE USES AND CONDITIONS WITHIN THE M.C.P. & P.C. PROXY PLAN AND SITE PLAN (AS2017030), ENTITLED "BLOOM VILLAGE AREAS 1-A", AS MAY BE AMENDED.
- 6) THE PROPERTY IS SERVED BY PUBLIC WATER AND SEWER ONLY.

PLAT NO.

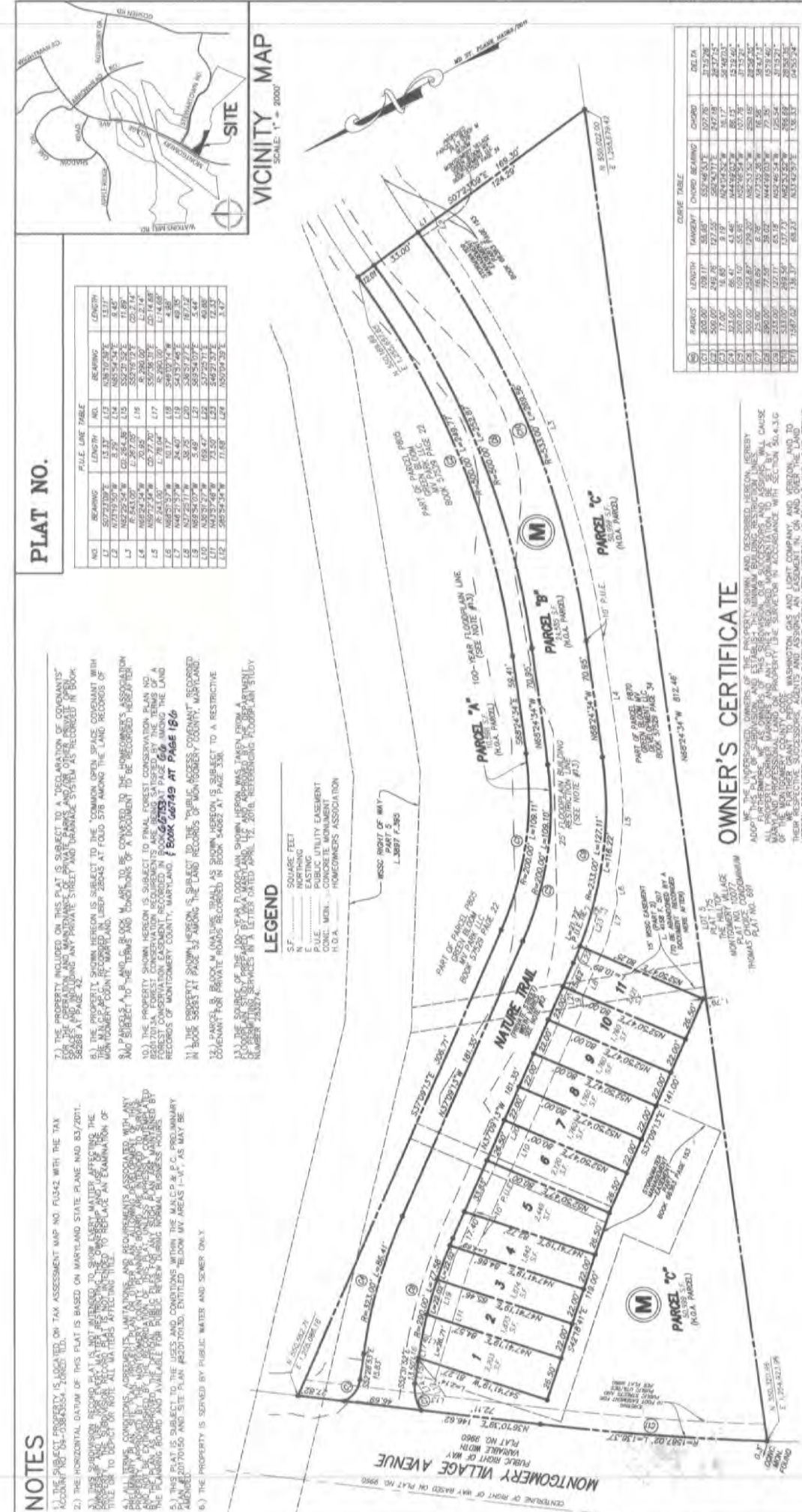
NO.	BEARING	LENGTH	NO.	LENGTH
L1	S 77°23'07" W	13.37'	L17	N 85°30'29" E
L2	S 82°25'54" W	69.384'±	L18	S 82°21'52" E
L3	S 84°10'07" W	67.977'±	L19	S 85°16'19" E
L4	N 86°29'34" W	79.935'±	L20	S 86°29'00" E
L5	N 84°10'07" W	67.977'±	L21	S 84°10'07" E
L6	N 86°29'34" W	79.935'±	L22	S 86°29'00" E
L7	N 84°10'07" W	67.977'±	L23	S 84°10'07" E
L8	N 86°29'34" W	79.935'±	L24	S 86°29'00" E
L9	N 84°10'07" W	67.977'±	L25	S 84°10'07" E
L10	N 86°29'34" W	79.935'±	L26	S 86°29'00" E
L11	N 84°10'07" W	67.977'±	L27	S 84°10'07" E
L12	N 86°29'34" W	79.935'±	L28	S 86°29'00" E

VICINITY MAP
SCALE: 1" = 2000'



LEGEND

- S.F. SQUARE FEET
- N. NORTHING
- E. EASTING
- FILE. CURVE DATA
- CONC. WALL. CONCRETE MONUMENT
- H.D.A. HOMEOWNERS ASSOCIATION



OWNER'S CERTIFICATE

I, the undersigned, owner of the property shown and described hereon, HEREBY ADOPT THIS PLAT OF SUBDIVISION AND ESTABLISH THE SHOWN BOUNDARY LINES, CAUSE AND PURPOSE BEING TO DIVIDE AND PARTITION THE LAND SHOWN IN THIS REFERENCE MAP INTO LOTS, BLOCKS AND PARCELS, TO BE SET IN ACCORDANCE WITH THE REFERENCE RECORDS OF MONTGOMERY COUNTY, MARYLAND.

THE SURVEYOR HAS OBTAINED THE NECESSARY RECORDS AND INFORMATION AND HAS FOUND THAT THE PROPERTY IS NOT SUBJECT TO ANY EASEMENTS, ENCUMBRANCES, OR OTHER RIGHTS WHICH COULD AFFECT THE INTERESTS OF THE PARTIES TO THIS PLAT.

THESE ARE NOT SURVEYING-LAW VIOLATIONS, NOR ARE THERE ANY UNLAWFUL OR UNREASONABLE CONDITIONS, RESTRICTIONS, OR EASEMENTS, ENCUMBRANCES, OR OTHER RIGHTS WHICH COULD AFFECT THE INTERESTS OF THE PARTIES TO THIS PLAT.

THE TOTAL AREA OF THIS PLAT OF SUBDIVISION IS 107,704 SQUARE FEET OR 2.47254 ACRES OF WHICH IS DEDICATED TO PUBLIC USE.

SURVEYOR'S CERTIFICATE

I HEREBY CERTIFY THAT THE PLAT SHOWN HEREON IS CORRECT, THAT IT IS A PART OF THE PROPERTY ACQUIRED BY THE GREEN BLOOM MV DEVELOPMENT LLC FROM US22 MR. MONTGOMERY VILLAGE BUSINESS TRUST, A MARYLAND LIMITED LIABILITY COMPANY, AND RECORDED IN BOOK 57028 AT PAGE 34.

I FURTHER CERTIFY THAT, ONCE ENGAGED AS DESCRIBED IN THE OWNERS CERTIFICATE HEREON, ALL PROPERTY MARKERS AND OTHER BOUNDARY MARKERS SHOWN THEREON WILL BE SET IN ACCORDANCE WITH THE PLAT.

THE TOTAL AREA OF THIS PLAT OF SUBDIVISION IS 107,704 SQUARE FEET OR 2.47254 ACRES OF WHICH IS DEDICATED TO PUBLIC USE.

AREA TABULATION

NO.	RADIUS	LENGTH	TANGENT	CHORD BEARING	CHORD	AREA
1	107.704	107.704	107.704	107.704	107.704	31,357.96
2	107.704	107.704	107.704	107.704	107.704	31,357.96
3	107.704	107.704	107.704	107.704	107.704	31,357.96
4	107.704	107.704	107.704	107.704	107.704	31,357.96
5	107.704	107.704	107.704	107.704	107.704	31,357.96
6	107.704	107.704	107.704	107.704	107.704	31,357.96
7	107.704	107.704	107.704	107.704	107.704	31,357.96
8	107.704	107.704	107.704	107.704	107.704	31,357.96
9	107.704	107.704	107.704	107.704	107.704	31,357.96
10	107.704	107.704	107.704	107.704	107.704	31,357.96
11	107.704	107.704	107.704	107.704	107.704	31,357.96
12	107.704	107.704	107.704	107.704	107.704	31,357.96
13	107.704	107.704	107.704	107.704	107.704	31,357.96
14	107.704	107.704	107.704	107.704	107.704	31,357.96
15	107.704	107.704	107.704	107.704	107.704	31,357.96
16	107.704	107.704	107.704	107.704	107.704	31,357.96
17	107.704	107.704	107.704	107.704	107.704	31,357.96
18	107.704	107.704	107.704	107.704	107.704	31,357.96
19	107.704	107.704	107.704	107.704	107.704	31,357.96
20	107.704	107.704	107.704	107.704	107.704	31,357.96
21	107.704	107.704	107.704	107.704	107.704	31,357.96
22	107.704	107.704	107.704	107.704	107.704	31,357.96
23	107.704	107.704	107.704	107.704	107.704	31,357.96
24	107.704	107.704	107.704	107.704	107.704	31,357.96
25	107.704	107.704	107.704	107.704	107.704	31,357.96
26	107.704	107.704	107.704	107.704	107.704	31,357.96
27	107.704	107.704	107.704	107.704	107.704	31,357.96
28	107.704	107.704	107.704	107.704	107.704	31,357.96

AREA TABULATION

LOTS
PARCELS
TOTAL AREA OF THIS PLAT

21.322 SQ.FT. OR 0.49406 ACRES
86182 SQ.FT. OR 1.97846 ACRES
107,704 SQ.FT. OR 2.47254 ACRES

SUBDIVISION RECORD PLAT
PLAT 577
BLOOM
MONTGOMERY VILLAGE
LOTS 1 - 11, PARCELS A, B & C, BLOCK M
MONTGOMERY COUNTY, MARYLAND
SCALE: 1" = 40'

DATE: DECEMBER 12, 2022
VINA MARYLAND, LLC
20251 Century Blvd., Suite 400
Germantown, MD 20874
301.916.4100 | vmla.com

Our Site Set on the Future.

TRUSTEE FOR INVE:
NAME: Lisa M. McCulley
TITLE: TRUSTEE
DATE: 12/12/2022

TRUSTEE FOR FIDUCIARY:
NAME: James Addison
TITLE: TRUSTEE
DATE: 1/16/2023

GRAPHIC SCALE
(IN FEET)
1 inch = 40 ft.

APPROVED: [Signature]
DATE: 12/28/2022

JAMES G. PRICE, III
REGISTERED PROFESSIONAL SURVEYOR
LICENSE EXPIRES: MAY 31, 2024

DEPARTMENT OF PERMITTING SERVICES
MONTGOMERY COUNTY, MARYLAND
APPROVED: [Signature]
DATE: 3/18/23
DIRECTOR

MARYLAND NATIONAL CAPITAL PARK & PLANNING COMMISSION
MONTGOMERY COUNTY PLANNING BOARD
APPROVED: [Signature]
DATE: 12/28/2022

M.C.P. & P.C. RECORDED FILE NO.:
CHAIR: MONTGOMERY PLAT SIGNATORY FOR SECRETARY-TREASURER
DATE: 12/28/2022

