

# ATTACHMENT D

# WOODWARD HIGH SCHOOL REOPENING - PHASE 2

## AMENDED FINAL FOREST CONSERVATION PLAN

11211 OLD GEORGETOWN ROAD, ROCKVILLE, MD 20852

### PLAN #F20230360

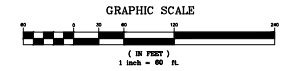
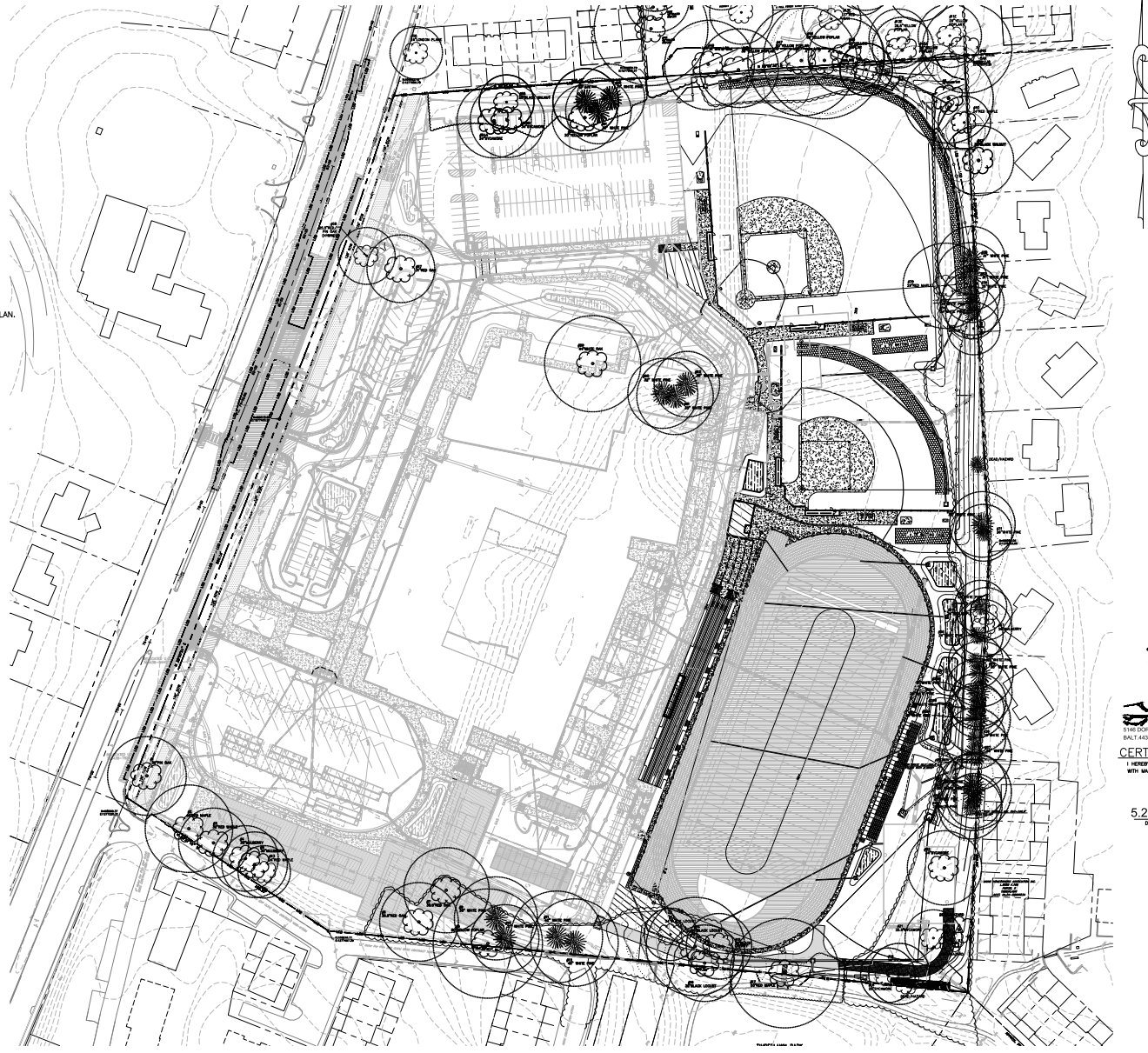
#### SHEET INDEX

- \* L-1.0A AMENDED FINAL FOREST CONSERVATION PLAN— COVER SHEET
- L-1.0 AMENDED FINAL FOREST CONSERVATION PLAN— RESOLUTION PAGE
- \*\* L-1.0B AMENDED FINAL FOREST CONSERVATION PLAN— RESOLUTION PAGE
- \* L-1.1 AMENDED FINAL FOREST CONSERVATION PLAN
- \* L-1.2 AMENDED FINAL FOREST CONSERVATION PLAN
- L-1.3 AMENDED FINAL FOREST CONSERVATION PLAN
- \* L-1.4 AMENDED FINAL FOREST CONSERVATION PLAN
- L-1.5 AMENDED FINAL FOREST CONSERVATION PLAN— NOTES & DETAILS
- \* SHEET AMENDED FROM PREVIOUSLY APPROVED PLAN.
- \*\* SHEET ADDED/REPLACED FROM PREVIOUSLY APPROVED PLAN.

#### LIST OF AMENDMENT ITEMS

1. ADDITION OF BALLFIELDS, GRADING, WALLS
2. OFFSITE FOREST CLEARING AND ONSITE/OFFSITE REGULATED TREES
3. LOCATION AND SPECIES OF LANDSCAPE FOREST CONSERVATION CREDIT TREES WHERE APPLICABLE.
4. ADDITIONAL LANDSCAPE CREDIT AREAS TOWARD FOREST CONSERVATION REQUIREMENTS.
5. UPDATED TREE TABLE
6. UPDATED FOREST CONSERVATION WORKSHEET

FCP NOTE:  
1. THIS PLAN IS AN AMENDMENT TO PREVIOUSLY APPROVED FCP# MR2020022



**NORTON LAND DESIGN**  
LANDSCAPE ARCHITECTURE + ENVIRONMENTAL PLANNING  
5140 DORSEY HALL DRIVE, 2ND FLOOR, BELTSVILLE CITY, MD 21054  
844-1-800-825-9199 / DC 340-362-2339 / WWW.NORTONLANDDESIGN.COM

**CERTIFICATION OF QUALIFIED PROFESSIONAL**  
I HEREBY CERTIFY THAT THE PLAN SHOWN HEREON HAS BEEN PREPARED IN ACCORDANCE WITH MARYLAND STATE, MICHIGAN AND MONTGOMERY COUNTY FOREST CONSERVATION LAWS.

5.23.2023  
DATE

*NLD*  
MICHELLE N. NORTON  
MONT / COUNTY CE 19.06.01  
QUALIFIED PROFESSIONAL

#### DEVELOPER'S CERTIFICATE

The Undersigned agrees to execute all the features of the Approved Final Forest Conservation Plan No. \_\_\_\_\_, including but not limited to, forest planting, maintenance, and all other applicable agreements.

Developer's Name: MONTGOMERY COUNTY PUBLIC SCHOOLS  
 Contact Person or Owner: SHINO SHIBASAKI  
 Project Name: 45 WEST OLIVE DRIVE, SUITE 4300  
 Address: ROCKVILLE, MARYLAND  
 Phone and Email: P 301-241-1864 / E SHINO\_S\_SIBASAKI@MCPSSD.MD.GOV  
 Signature: \_\_\_\_\_

OWNER/APPLICANT  
MONTGOMERY COUNTY PUBLIC SCHOOLS  
ATTENTION: SHINO SHIBASAKI  
45 WEST OLIVE DRIVE, SUITE 4300  
ROCKVILLE, MD 20850  
(240) 314-1094  
SHINO\_S\_SIBASAKI@MCPSSD.MD.GOV

AMENDED FINAL FOREST CONSERVATION PLAN  
COVER SHEET  
Woodward High School Reopening - Phase 2  
11211 Old Georgetown Rd., MD 20852

DATE	DESCRIPTION

L-1.0A

06/08/2023  
MCPSP# F20230360  
PLAN AND COVER SHEET

LIBERS 3195 COLDS 100  
ELECTION DISTRICT 0601  
ACCOUNT NO. 00454920  
ELECTION DISTRICT 04

**ADTEK**  
100 W. MARKET STREET, SUITE 200  
ROCKVILLE, MD 20850  
www.adtek.com

11709 Beltsville Drive  
Suite 600  
Crownsville, MD 21035  
Tel: 301-336-1100  
www.grimmudpanzer.com

**G&P**  
GRIMM AND PARKER

# 21918

PLAN# F20230360/AMENDED FCP# MR2020022/DATE 5.23.2023  
 MONTGOMERY COUNTY PUBLIC SCHOOLS