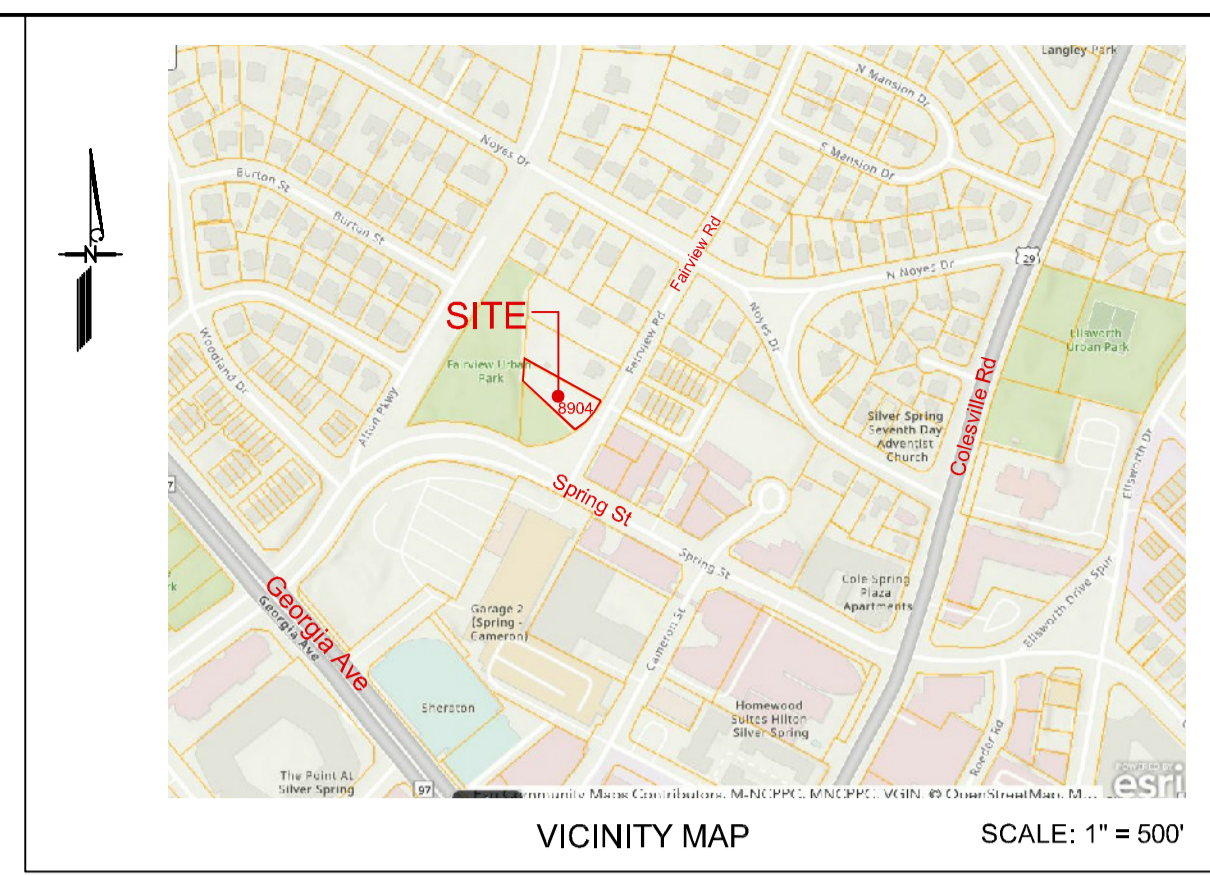
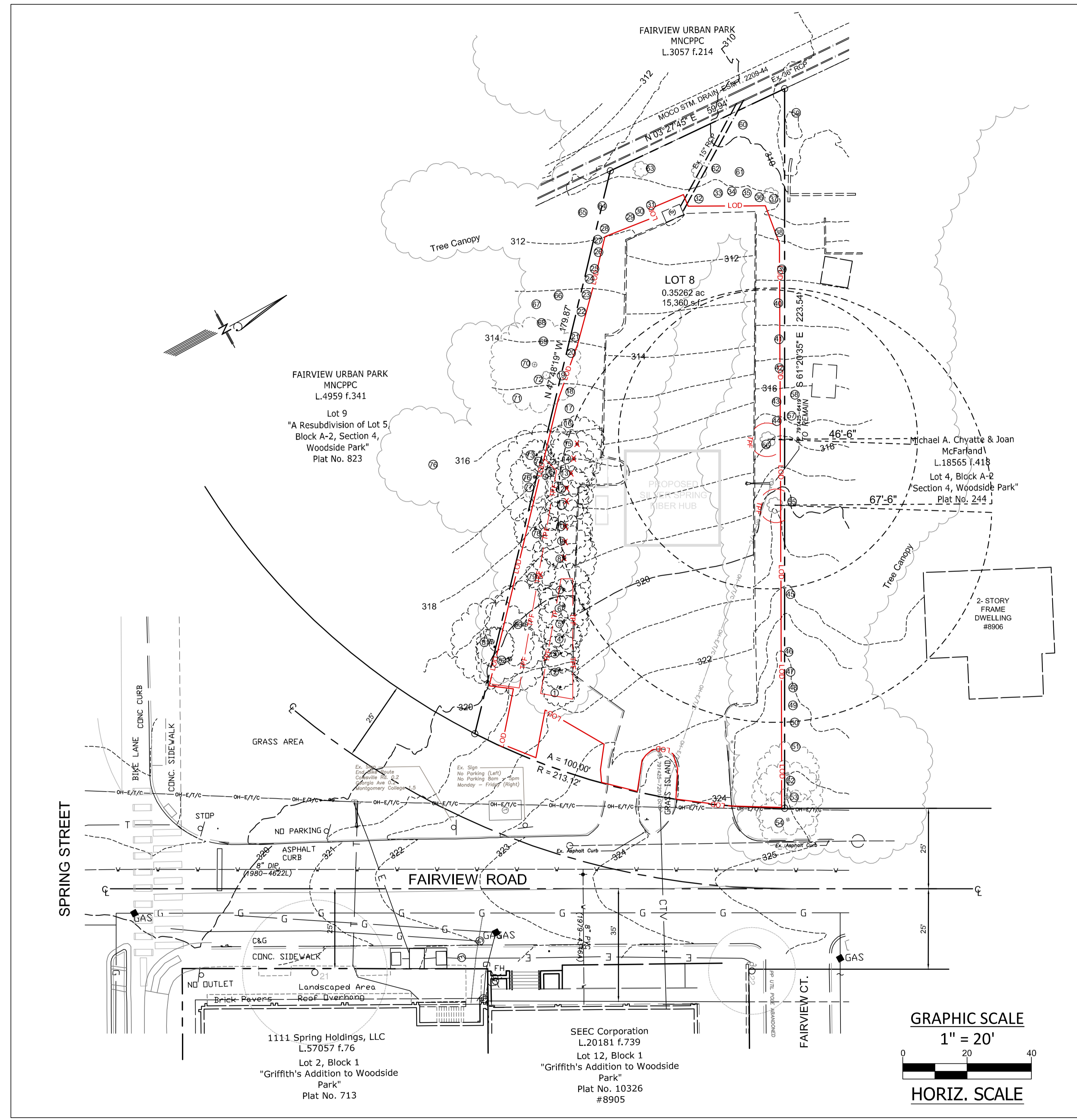
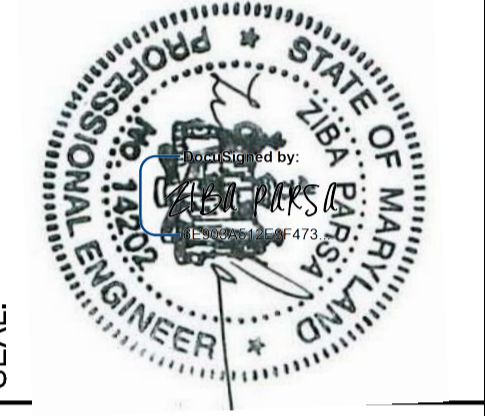


MONTGOMERY PLANNING DEPARTMENT
 THE MARYLAND NATIONAL CAPITAL PARK AND PLANNING COMMISSION
APPROVED - 42024241E
 Tsaquan Gatling
 06/27/24




CDCI, INC.
 5868 HUBBARD DRIVE
 ROCKVILLE, MD 20852
 PHONE: 301.984.4221
 FAX: 301.984.4335

PROFESSIONAL CERTIFICATION. I HEREBY CERTIFY THAT THESE DOCUMENTS WERE PREPARED OR APPROVED BY ME, AND THAT I AM A DULY LICENSED PROFESSIONAL ENGINEER UNDER THE LAWS OF THE STATE OF MARYLAND.
 LICENSE NO. 14202
 EXPIRATION DATE: NOVEMBER 19, 2024



TREE INVENTORY

Tree ID	Common Name	Genus	Species	DBH	Height Class	Age Class	Condition Class	Tree & Shrub Work Phase
1	Holly-American	<i>Ilex</i>	<i>opaca</i>	8	Medium	Semi-mature	Good	3
2	Holly-American	<i>Ilex</i>	<i>opaca</i>	8	Medium	Semi-mature	Good	3
3	Holly-American	<i>Ilex</i>	<i>opaca</i>	9	Medium	Semi-mature	Good	3
4	Holly-American	<i>Ilex</i>	<i>opaca</i>	8	Medium	Semi-mature	Good	3
5	Holly-American	<i>Ilex</i>	<i>opaca</i>	9	Medium	Semi-mature	Good	3
6	Holly-American	<i>Ilex</i>	<i>opaca</i>	9	Medium	Semi-mature	Good	3
7	Holly-American	<i>Ilex</i>	<i>opaca</i>	10	Medium	Semi-mature	Good	3
8	Holly-American	<i>Ilex</i>	<i>opaca</i>	11	Medium	Semi-mature	Good	3
9	Holly-American	<i>Ilex</i>	<i>opaca</i>	10.7	Medium	Semi-mature	Good	3
10	Holly-American	<i>Ilex</i>	<i>opaca</i>	10	Medium	Semi-mature	Good	3
11	Holly-American	<i>Ilex</i>	<i>opaca</i>	9.6	Medium	Semi-mature	Good	3
12	Holly-American	<i>Ilex</i>	<i>opaca</i>	10.5	Medium	Semi-mature	Good	3
13	Holly-American	<i>Ilex</i>	<i>opaca</i>	10	Medium	Semi-mature	Good	3
14	Holly-American	<i>Ilex</i>	<i>opaca</i>	11	Medium	Semi-mature	Good	3
15	Holly-American	<i>Ilex</i>	<i>opaca</i>	11	Medium	Semi-mature	Good	3
16	Holly-American	<i>Ilex</i>	<i>opaca</i>	10	Medium	Semi-mature	Good	3
17	Holly-American	<i>Ilex</i>	<i>opaca</i>	10	Medium	Semi-mature	Good	3
18	Holly-American	<i>Ilex</i>	<i>opaca</i>	9	Medium	Semi-mature	Good	3
19	Holly-American	<i>Ilex</i>	<i>opaca</i>	7	Medium	Semi-mature	Good	3
20	Holly-American	<i>Ilex</i>	<i>opaca</i>	5	Medium	Semi-mature	Good	3
21	Holly-American	<i>Ilex</i>	<i>opaca</i>	7	Medium	Semi-mature	Good	3
22	Holly-American	<i>Ilex</i>	<i>opaca</i>	9	Medium	Semi-mature	Good	3
23	Holly-American	<i>Ilex</i>	<i>opaca</i>	6	Medium	Semi-mature	Good	3
24	Holly-American	<i>Ilex</i>	<i>opaca</i>	7	Medium	Semi-mature	Good	3
25	Holly-American	<i>Ilex</i>	<i>opaca</i>	9	Medium	Semi-mature	Good	3
26	Holly-American	<i>Ilex</i>	<i>opaca</i>	6	Medium	Semi-mature	Good	3
27	Holly-American	<i>Ilex</i>	<i>opaca</i>	7	Medium	Semi-mature	Good	3
28	Holly-American	<i>Ilex</i>	<i>opaco</i>	8	Medium	Semi-mature	Good	3
29	Holly-American	<i>Ilex</i>	<i>opaca</i>	6.4	Medium	Semi-mature	Good	3
30	Holly-American	<i>Ilex</i>	<i>opaca</i>	8	Medium	Semi-mature	Good	3
31	Holly-American	<i>Ilex</i>	<i>opaca</i>	6	Medium	Semi-mature	Good	3
32	Holly-American	<i>Ilex</i>	<i>opaca</i>	5	Medium	Semi-mature	Dead	1
33	Holly-American	<i>Ilex</i>	<i>opaca</i>	5	Medium	Semi-mature	Good	3
34	Holly-American	<i>Ilex</i>	<i>opaca</i>	7	Medium	Semi-mature	Good	3
35	Holly-American	<i>Ilex</i>	<i>opaca</i>	10	Medium	Semi-mature	Good	3
36	Holly-American	<i>Ilex</i>	<i>opaca</i>	10	Medium	Semi-mature	Good	3
37	Holly-American	<i>Ilex</i>	<i>opaca</i>	11	Medium	Semi-mature	Good	3
38	Holly-American	<i>Ilex</i>	<i>opaca</i>	10	Medium	Semi-mature	Good	3
39	Holly-American	<i>Ilex</i>	<i>opaca</i>	9	Medium	Semi-mature	Good	3
40	Holly-American	<i>Ilex</i>	<i>opaca</i>	9	Medium	Semi-mature	Good	3
41	Holly-American	<i>Ilex</i>	<i>opaca</i>	10	Medium	Semi-mature	Good	3
42	Holly-American	<i>Ilex</i>	<i>opaca</i>	10	Medium	Semi-mature	Good	3
43	Holly-American	<i>Ilex</i>	<i>opaca</i>	9	Medium	Semi-mature	Good	3
44	Holly-American	<i>Ilex</i>	<i>opaco</i>	6	Medium	Semi-mature	Good	3
45	Holly-American	<i>Ilex</i>	<i>opaca</i>	4.4	Medium	Semi-mature	Good	3
46	Holly-American	<i>Ilex</i>	<i>opaca</i>	7	Medium	Semi-mature	Good	3
47	Holly-American	<i>Ilex</i>	<i>opaca</i>	9	Medium	Semi-mature	Good	3
48	Holly-American	<i>Ilex</i>	<i>opaca</i>	10	Medium	Semi-mature	Good	3
49	Holly-American	<i>Ilex</i>	<i>opaca</i>	11	Medium	Semi-mature	Good	3
50	Holly-American	<i>Ilex</i>	<i>opaca</i>	13	Medium	Semi-mature	Good	3
51	Leyland Cypress	<i>x Cupressocyparis</i>	<i>leylandii</i>	10	Medium	Semi-mature	Dead	1
52	Leyland Cypress	<i>x Cupressocyparis</i>	<i>leylandii</i>	12	Medium	Semi-mature	Fair	1
53	Leyland Cypress	<i>x Cupressocyparis</i>	<i>leylandii</i>	15	Medium	Semi-mature	Good	1
54	Leyland Cypress	<i>x Cupressocyparis</i>	<i>leylandii</i>	13	Medium	Semi-mature	Good	1
55	Walnut-Black	<i>Juglans</i>	<i>nlgra</i>	45	Large	Mature	Good	1
56	Tulipree	<i>Liriodendron</i>	<i>tulipifera</i>	31	Large	Mature	Good	1
57	Cherry-Black	<i>Prunus</i>	<i>serotina</i>	18	Large	Mature	Poor	1
58	Maple-Red	<i>Acer</i>	<i>rubrum</i>	16	Medium	Semi-mature	Fair	1
59	Elm-American	<i>Ulmus</i>	<i>americana</i>	15	Medium	Semi-mature	Fair	2
60	Maple-Red	<i>Acer</i>	<i>rubrum</i>	23	Medium	Semi-mature	Dead	2
61	Elm-American	<i>Ulmus</i>	<i>americana</i>	5	Medium	Young	Good	2
62	Tulipree	<i>Liriodendron</i>	<i>tulipifera</i>	32	Large	Mature	Fair	1
63	Mulberry-White	<i>Morus</i>	<i>alba</i>	12.7	Medium	Semi-mature	Fair	2
64	Mulberry-White	<i>Morus</i>	<i>alba</i>	8	Medium	Semi-mature	Good	2
65	Elm-American	<i>Ulmus</i>	<i>americana</i>	9	Medium	Semi-mature	Good	3
66	Mulberry-White	<i>Morus</i>	<i>alba</i>	21	Large	Mature	Fair	1
67	Locust-Black	<i>Robinia</i>	<i>pseudacacia</i>	14	Large	Semi-mature	Good	3
68	Holly-American	<i>Ilex</i>	<i>opaca</i>	17	Large	Mature	Good	3
69	Mulberry-White	<i>Morus</i>	<i>alba</i>	22	Large	Mature	Fair	1
70	Locust-Black	<i>Robinia</i>	<i>pseudacacia</i>	30	Large	Mature	Good	1
71	Elm-American	<i>Ulmus</i>	<i>americana</i>	16	Large	Semi-mature	Fair	3
72	Ash-White	<i>Fraxinus</i>	<i>americana</i>	4	Medium	Young	Good	3
73	Locust-Black	<i>Robinia</i>	<i>pseudacacia</i>	5	Medium	Young	Fair	3
74	Locust-Black	<i>Robinia</i>	<i>pseudacacia</i>	4	Medium	Young	Good	3
75	Cherry-Black	<i>Prunus</i>	<i>serotina</i>	21	Large	Mature	Fair	1
76	Mulberry-White	<i>Morus</i>	<i>alba</i>	10	Medium	Semi-mature	Fair	3
77	Locust-Black	<i>Robinia</i>	<i>pseudacacia</i>	5	Medium	Young	Fair	3
78	Locust-Black	<i>Robinia</i>	<i>pseudacacia</i>	12	Large	Semi-mature	Good	3
79	Mulberry-White	<i>Morus</i>	<i>alba</i>	5	Medium	Young	Fair	3
80	Cherry-Black	<i>Prunus</i>	<i>serotina</i>	16	Large	Semi-mature	Fair	1
81	Maple-Norway	<i>Acer</i>	<i>platanoides</i>	15.7	Large	Semi-mature	Fair	2
82	Elm-American	<i>Ulmus</i>	<i>americana</i>	16	Large	Semi-mature	Fair	2

LEGEND

- LOD — LOD — LIMITS OF DISTURBANCE
- — — — — PROPERTY LINE
- — — — — EXISTING CONTOURS
- TPF — TPF — TREE PROTECTION FENCE
- X 320.0 EXISTING SPOT ELEVATIONS
- ✗ REMOVE EXISTING TREES
- UTILITY POLE
- — — — — CRITICAL ROOT ZONE
- ☁ EXISTING TREE CANOPY

PROJECT NAME:
LOT 8
A RESUBDIVISION OF LOT 5,
BLOCK A-2, SECTION 4,
WOODSIDE PARK
PLAT NO. 823

SEAL:

MARK	DATE	DESCRIPTION	ISSUE

DATE: 05.02.2024
 PROJECT: 24-
 SCALE: AS SHOWN

SHEET TITLE:
TREE SAVE PLAN
#42024241E

SHEET NO.:
TSP-001