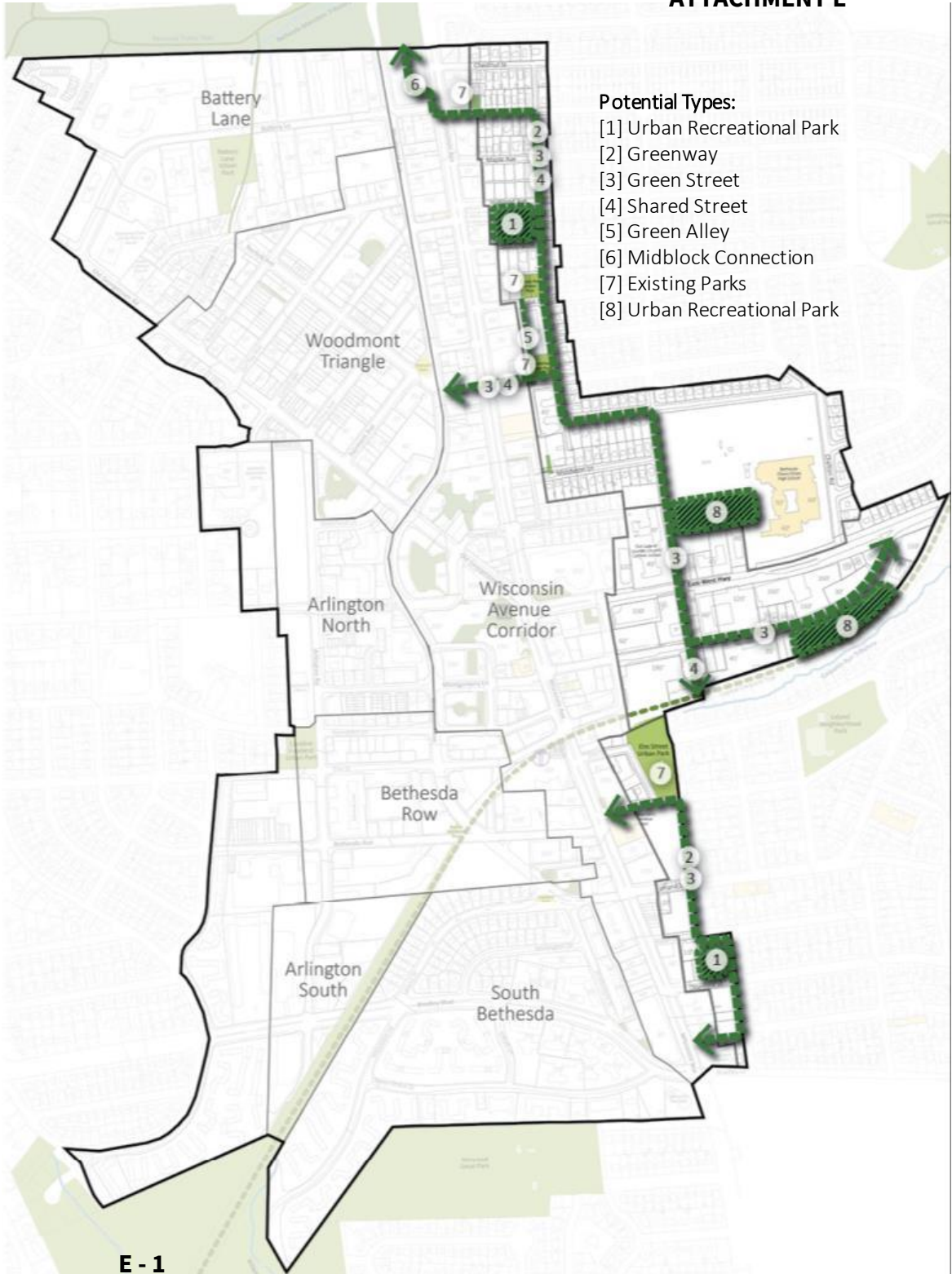


Eastern Greenway

Framework Concept

A unified green connector along the eastern edge of the sector plan area consisting of a north section and a south section

- Provides vibrant, engaging park/open space, pathways and environmental benefits
- Has a unified Design Aesthetic throughout the Greenway
- Connects existing and proposed open spaces
- Creates transition to adjacent residential neighborhoods

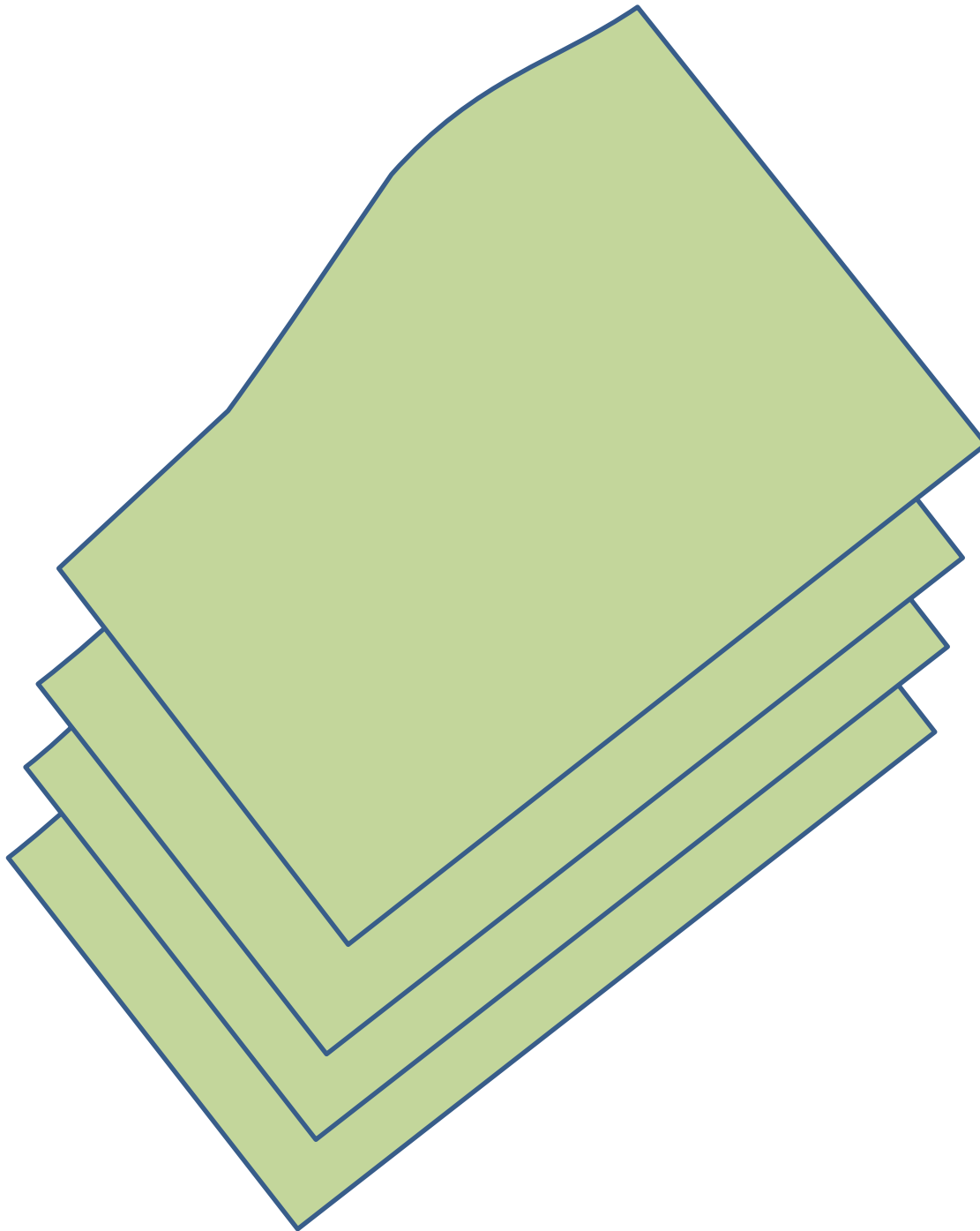


Eastern Greenway – North and South Sections



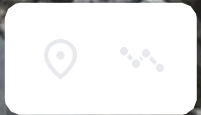
- Sector Plan Boundary
- District Boundary
- M-NCPPC Park
- County DOT Owned Public Space
- Privately Owned Public Use Space
- Trail
- Metro Station
- Proposed Metro Station Entrance
- Proposed Purple Line
- Proposed BRT
- Recommended Bike Priority Street + Canopy Corridor
- Recommended Public Connection
- Recommended New Street
- Recommended Shared Street
- Enhanced Intersection
- Recommended/Enhanced Open Space
- Potential Open Space (Location TBD)
- Illustrative Potential Development

Big Picture Concepts

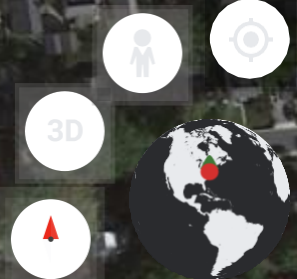


- Key Features- Promenade and Enticing Features
- Approach in a Sustainable Way
- Connectivity and Unified Design
- Visible and Welcoming to the Public

Big Picture
Connectivity
Concept – How
to make the 6
blocks of green
spaces unified
into one theme
and experience

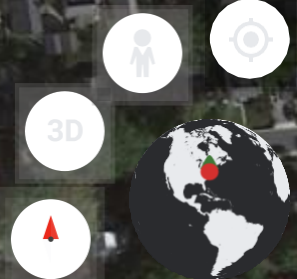
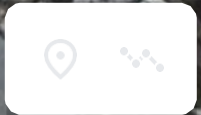
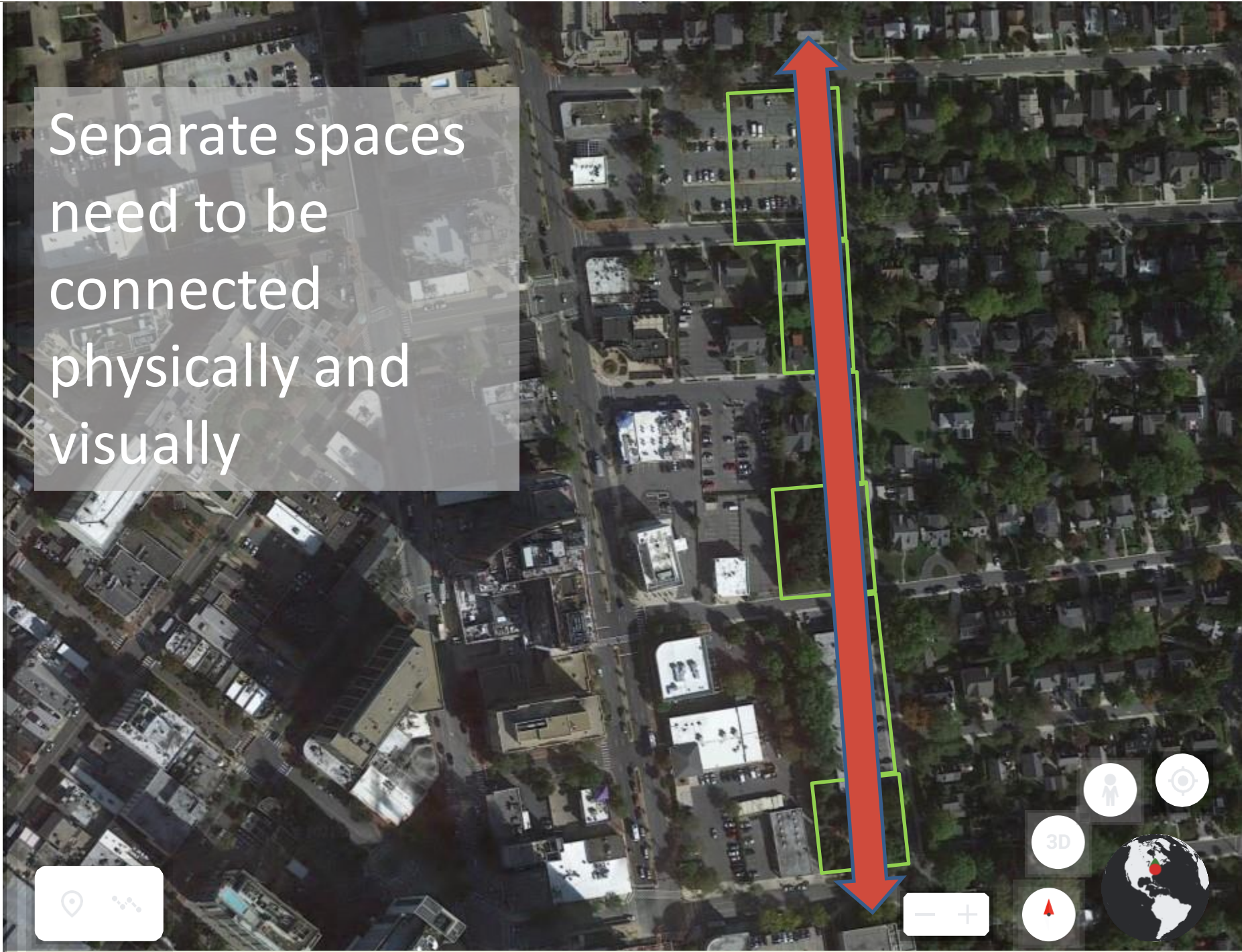


100%



100 m Camera: 1,013 m 38°59'23"N 77°05'30"W 107 m

Separate spaces
need to be
connected
physically and
visually



100%

100 m Camera: 1,013 m 38°59'23"N 77°05'30"W 107 m



Shading and Gateway Features



Seating Nodes along Promenade



Unified Paving and Wayfinding Elements

Promenade Precedent Images



Playful Seating



Water Play



Playful Hang Out



Sculptural Play Elements

Enticing Features



Native and Lush Plantings



ATTACHMENT E

Stormwater Management Features that also Invite Play/Interaction



Solar Powered Design Features



Sustainability Precedent Images