

● BRT Stations

Pedestrian Level of Comfort

- Comfortable for Most Pedestrians
- Not Comfortable for Most Pedestrians

Pedestrian Trips

- 0-500
- 501-1000
- 1001-1500
- 1500<

0.55 Miles

Sources: Esri, TomTom, Garmin, FAO, NOAA, USGS, © OpenStreetMap contributors, and the GIS User Community



● BRT Stations

Level of Traffic Stress

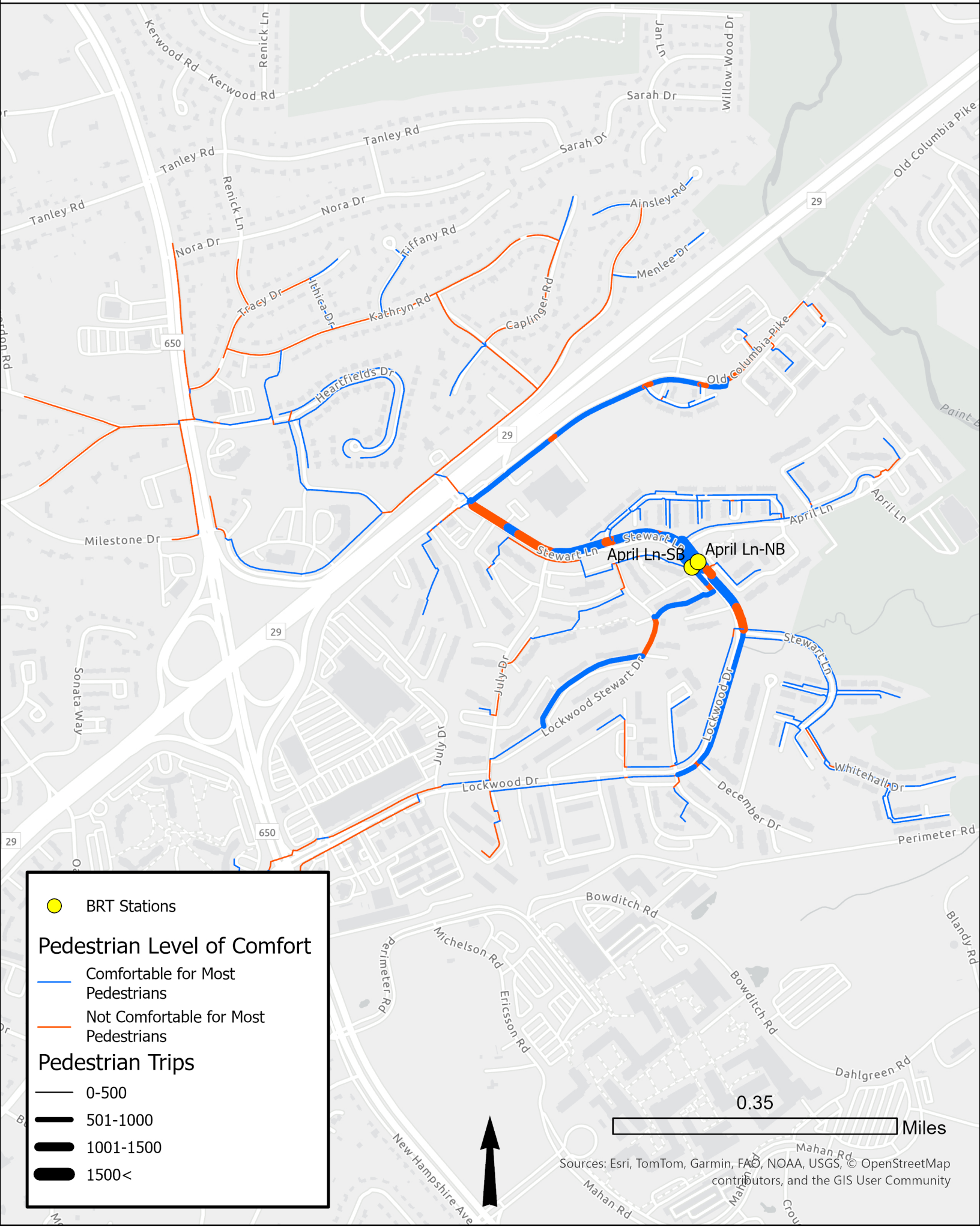
— Comfortable for Most Cyclists

— Not Comfortable for Most Cyclists



Miles

Sources: Esri, TomTom, Garmin, FAO, NOAA, USGS, © OpenStreetMap contributors, and the GIS User Community



● BRT Stations

Pedestrian Level of Comfort

- Comfortable for Most Pedestrians
- Not Comfortable for Most Pedestrians


Pedestrian Trips

- 0-500
- 501-1000
- 1001-1500
- 1500<


0.35 Miles


Sources: Esri, TomTom, Garmin, FAO, NOAA, USGS, © OpenStreetMap contributors, and the GIS User Community



 BRT Stations

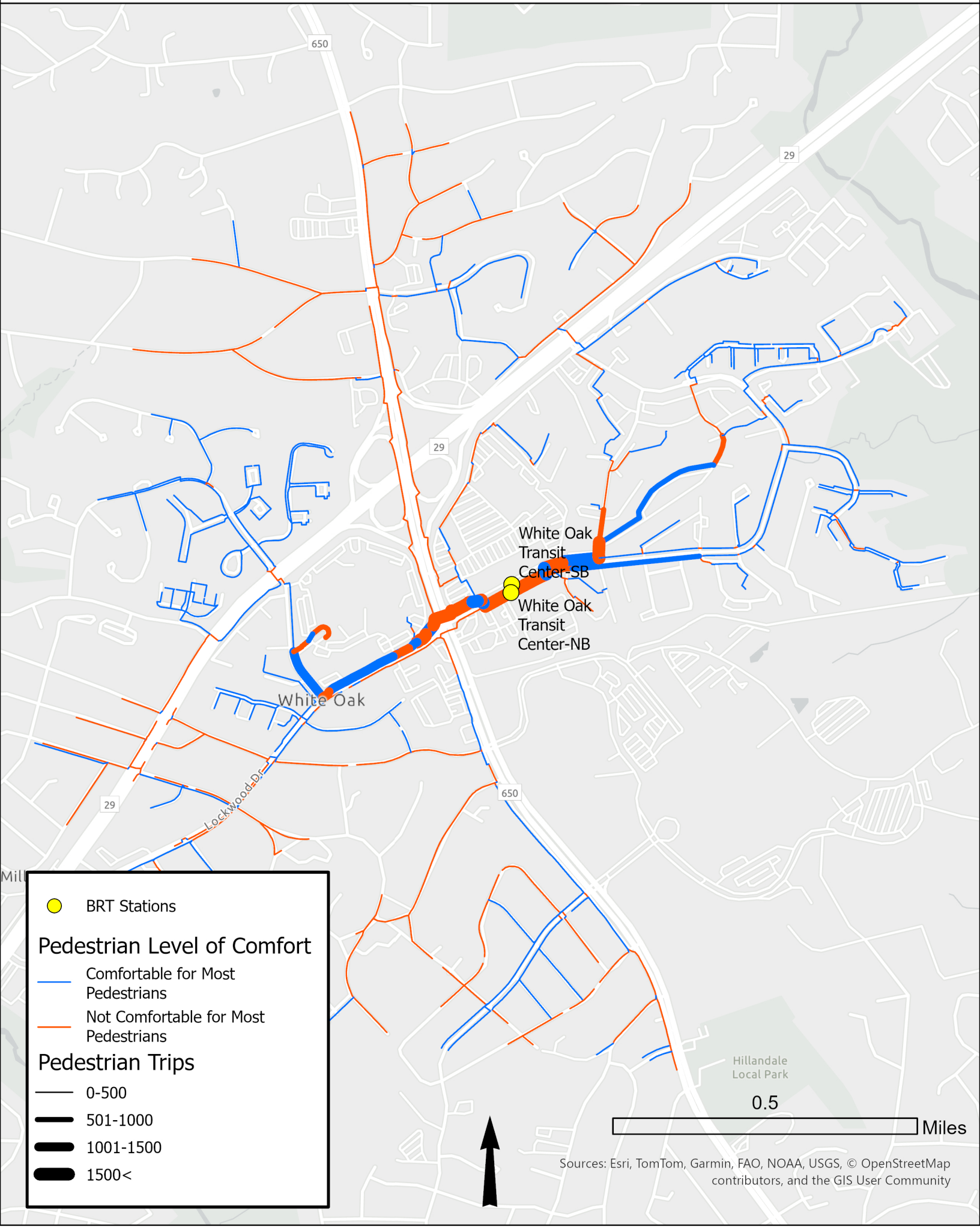
Level of Traffic Stress

 Comfortable for Most Cyclists

 Not Comfortable for Most Cyclists

0.1 Miles

Sources: Esri, TomTom, Garmin, FAO, NOAA, USGS, © OpenStreetMap contributors, and the GIS User Community



● BRT Stations

Pedestrian Level of Comfort

— Comfortable for Most Pedestrians

— Not Comfortable for Most Pedestrians

Pedestrian Trips

— 0-500

— 501-1000

— 1001-1500

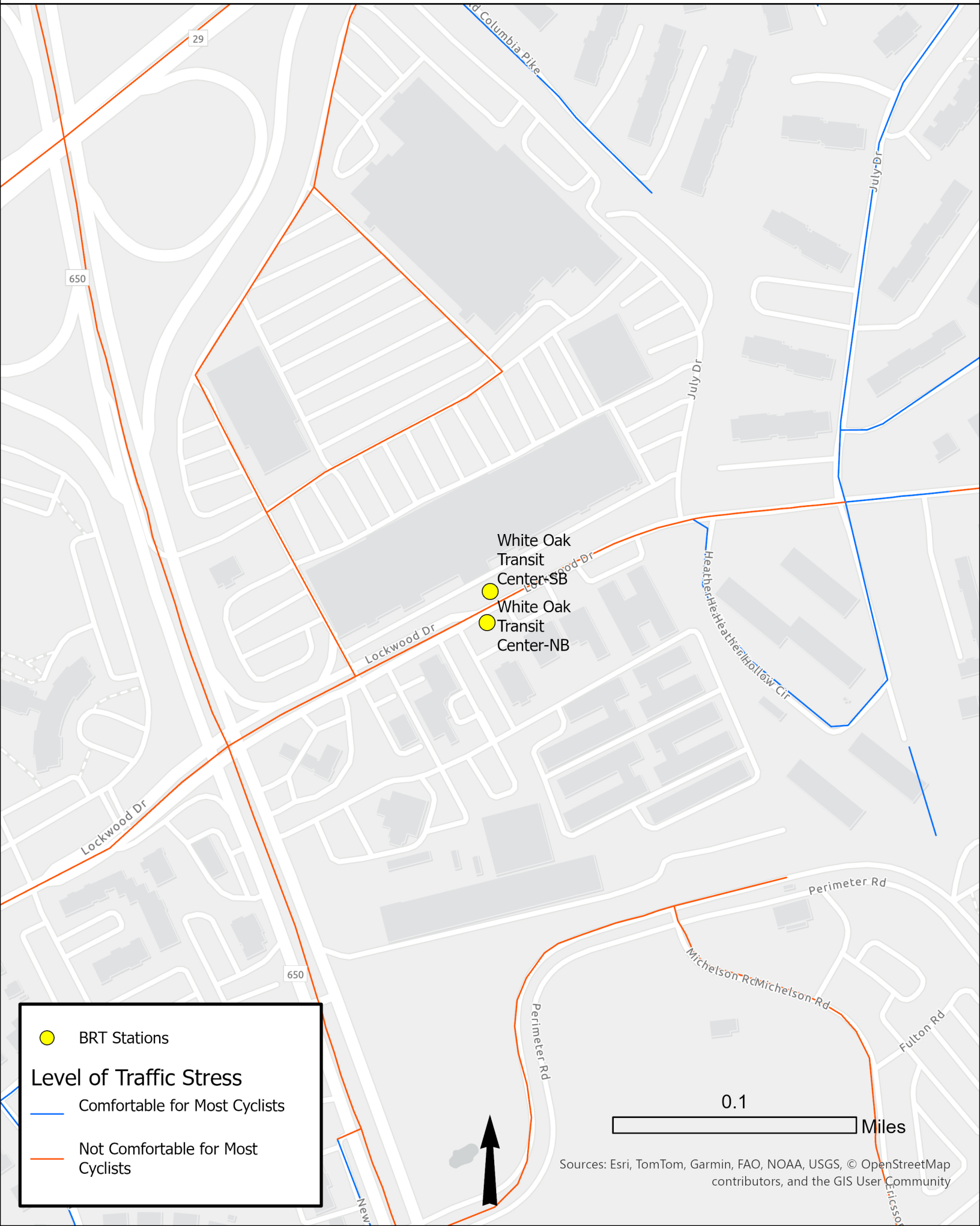
— 1500<

Hillandale Local Park

0.5

Miles

Sources: Esri, TomTom, Garmin, FAO, NOAA, USGS, © OpenStreetMap contributors, and the GIS User Community



 BRT Stations

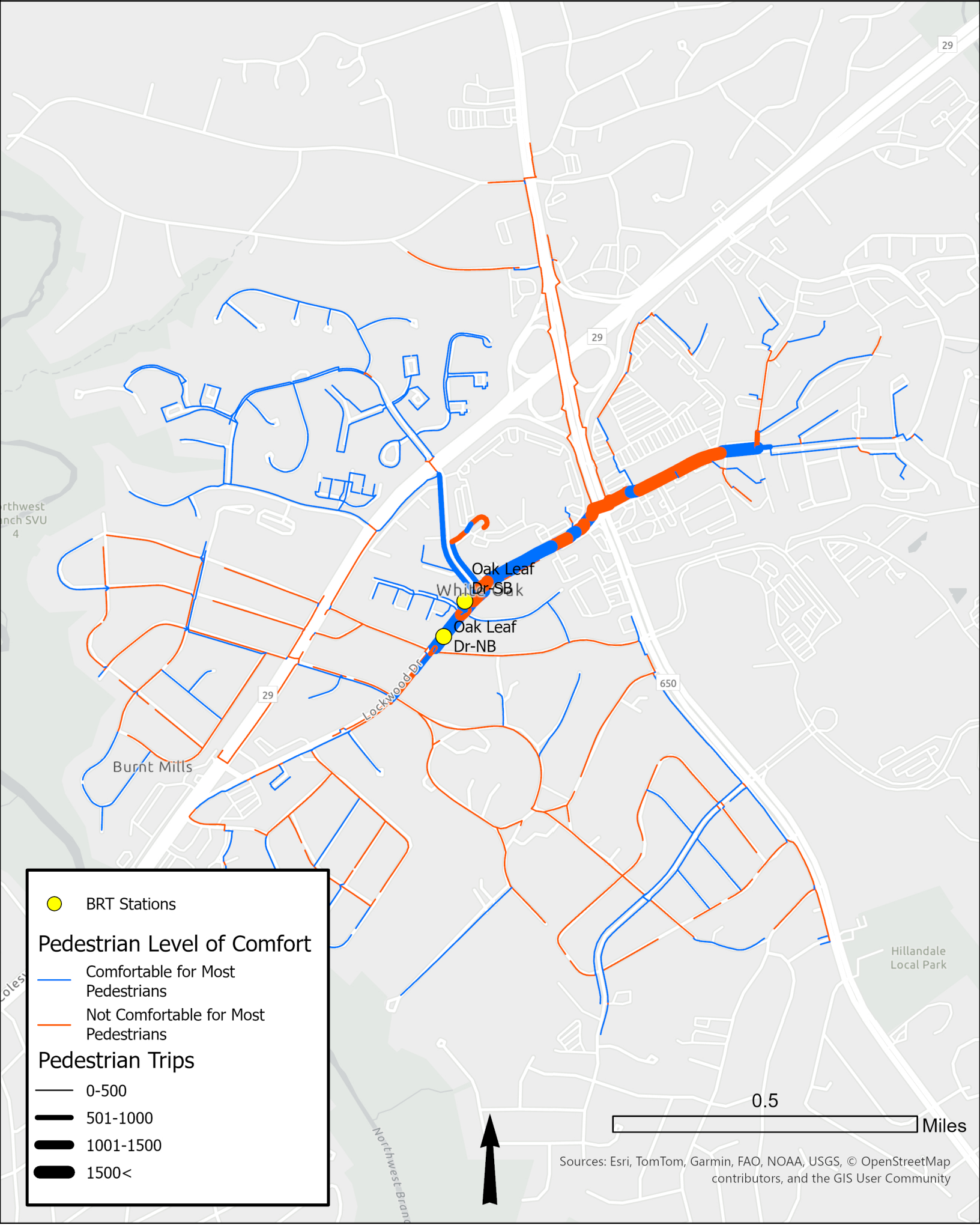
Level of Traffic Stress

 Comfortable for Most Cyclists

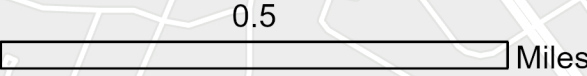
 Not Comfortable for Most Cyclists

0.1 Miles

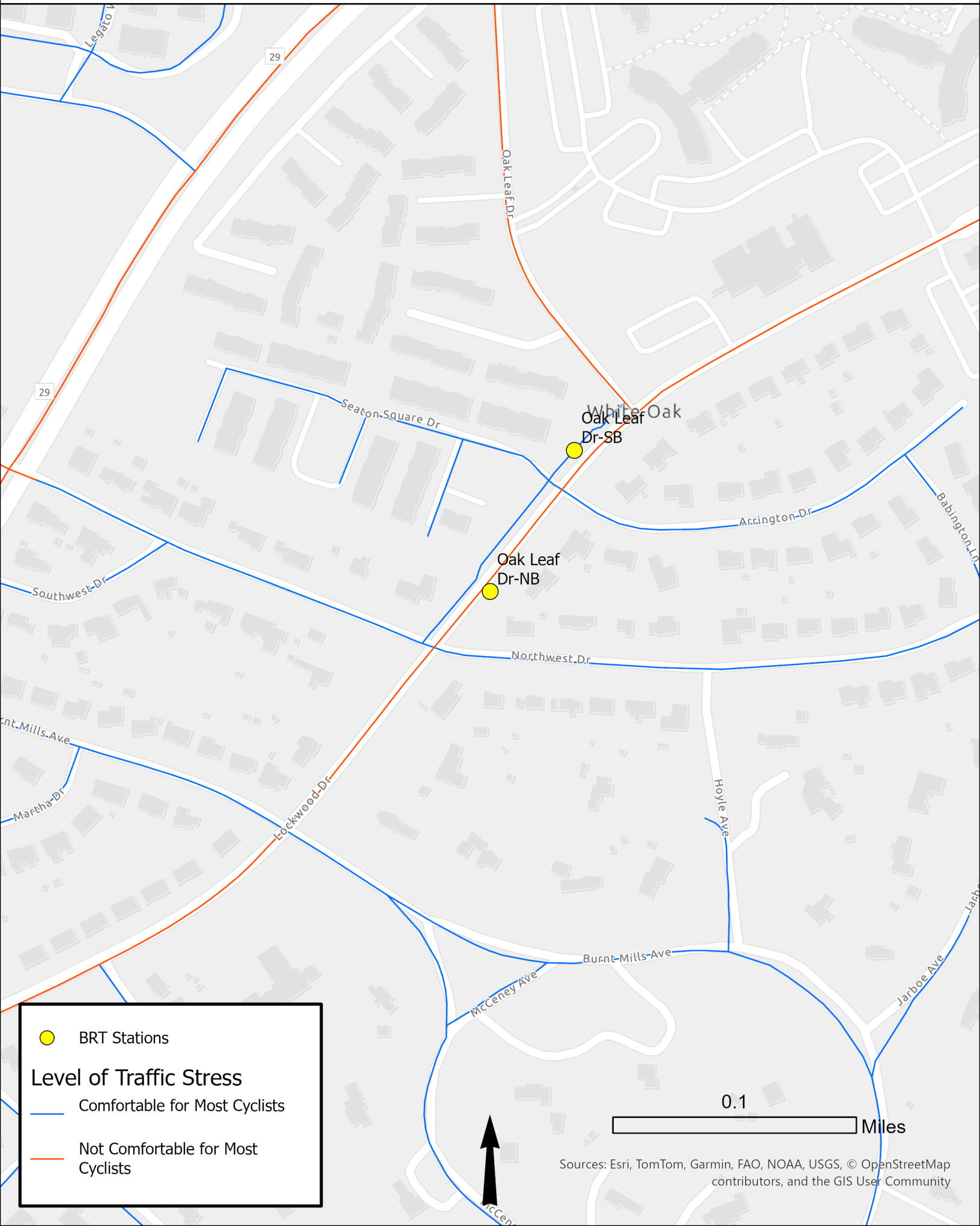
Sources: Esri, TomTom, Garmin, FAO, NOAA, USGS, © OpenStreetMap contributors, and the GIS User Community



● BRT Stations
Pedestrian Level of Comfort
— Comfortable for Most Pedestrians
— Not Comfortable for Most Pedestrians
Pedestrian Trips
 0-500
 501-1000
 1001-1500
 1500<



Sources: Esri, TomTom, Garmin, FAO, NOAA, USGS, © OpenStreetMap contributors, and the GIS User Community



 BRT Stations

Level of Traffic Stress

 Comfortable for Most Cyclists

 Not Comfortable for Most Cyclists

0.1 Miles

Sources: Esri, TomTom, Garmin, FAO, NOAA, USGS, © OpenStreetMap contributors, and the GIS User Community

Kemp Mill Estates Local Park

Northwest Branch SVU 4


White Oak

Burnt Mills Shopping Center-SB
Burnt Mills Shopping Center-NB



Colesville Rd

Northwest Branch Anacostia River





Four Corners

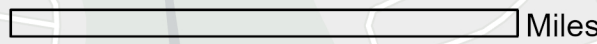
 BRT Stations

Pedestrian Level of Comfort

-  Comfortable for Most Pedestrians
-  Not Comfortable for Most Pedestrians

Pedestrian Trips

-  0-500
-  501-1000
-  1001-1500
-  1500<



Sources: Esri, TomTom, Garmin, FAO, NOAA, USGS, © OpenStreetMap contributors, and the GIS User Community



● BRT Stations

Level of Traffic Stress

— Comfortable for Most Cyclists

— Not Comfortable for Most Cyclists

0.1

Miles

Sources: Esri, TomTom, Garmin, FAO, NOAA, USGS, © OpenStreetMap contributors, and the GIS User Community



 BRT Stations

Level of Traffic Stress

 Comfortable for Most Cyclists

 Not Comfortable for Most Cyclists

0.1 Miles

Sources: Esri, TomTom, Garmin, FAO, NOAA, USGS, © OpenStreetMap contributors, and the GIS User Community